



ELECTRONIC COPY

LG652444849
Report verification at igi.org



September 14, 2024

IGI Report Number **LG652444849**

Description **LABORATORY GROWN DIAMOND**

Shape and Cutting Style **PRINCESS CUT**

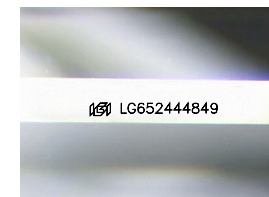
Measurements **5.37 X 5.31 X 4.13 MM**

GRADING RESULTS

Carat Weight **1.03 CARAT**

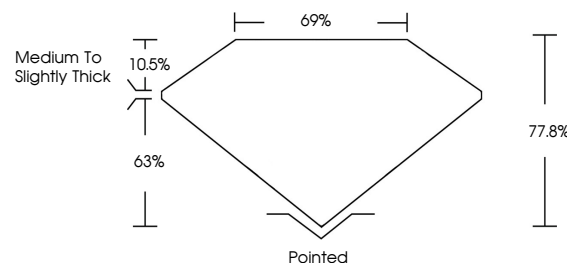
Color Grade **G**

Clarity Grade **VVS 2**

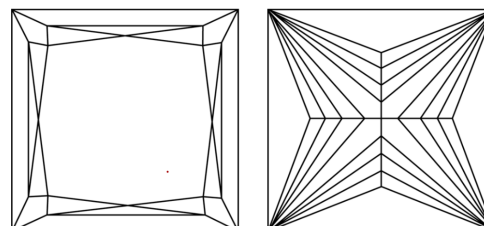


Sample Image Used

PROPORTIONS



CLARITY CHARACTERISTICS



KEY TO SYMBOLS

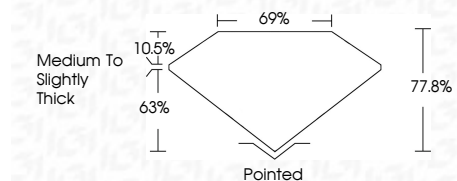
Red symbols indicate internal characteristics.
Green symbols indicate external characteristics.

COLOR

D E F G H I J Faint Very Light Light

CLARITY

| | | | | |
|---------------------|-----------------------------|------------------------|-------------------|------------------|
| IF | VS ¹⁻² | VS ¹⁻² | SI ¹⁻² | I ¹⁻³ |
| Internally Flawless | Very Very Slightly Included | Very Slightly Included | Slightly Included | Included |



ADDITIONAL GRADING INFORMATION

Polish **EXCELLENT**

Symmetry **VERY GOOD**

Fluorescence **NONE**

Inscription(s) **IGI LG652444849**

Comments: This Laboratory Grown Diamond was created by Chemical Vapor Deposition (CVD) growth process.
Type IIa



IGI



September 14, 2024
IGI Report No. LG652444849
PRINCESS CUT

1.03 CARAT
G

5.37 X 5.31 X 4.13 MM
VVS 2

Color Grade
G

Depth
77.06%

Table
63%

Girdle
Medium to Slightly Thick

Culet
Pointed

Polish
EXCELLENT

Symmetry
VERY GOOD

Fluorescence
NONE

Inscription(s)
IGI LG652444849

Comments: This Laboratory Grown Diamond was created by Chemical Vapor Deposition (CVD) growth process.
Type IIa