



ELECTRONIC COPY

LABORATORY GROWN DIAMOND REPORT

September 14, 2024
IGI Report Number LG652446017
Description LABORATORY GROWN DIAMOND
Shape and Cutting Style CUT CORNERED RECTANGULAR MODIFIED BRILLIANT
Measurements 9.02 X 6.17 X 4.20 MM

GRADING RESULTS

Carat Weight 2.04 CARATS
Color Grade G
Clarity Grade VS 1

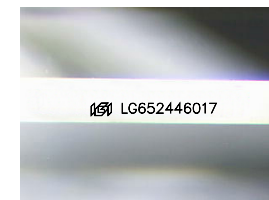
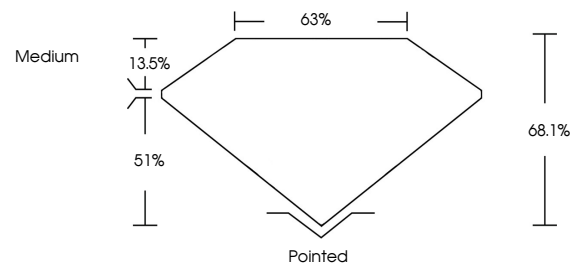
ADDITIONAL GRADING INFORMATION

Polish EXCELLENT
Symmetry EXCELLENT
Fluorescence NONE

Inscription(s) LG652446017

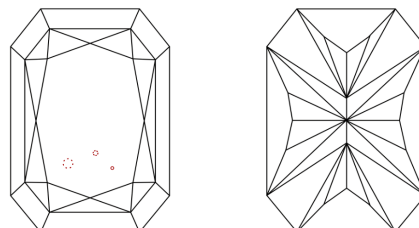
Comments: This Laboratory Grown Diamond was created by Chemical Vapor Deposition (CVD) growth process. Type IIa

PROPORTIONS



Sample Image Used

CLARITY CHARACTERISTICS



KEY TO SYMBOLS

Red symbols indicate internal characteristics. Green symbols indicate external characteristics.

COLOR

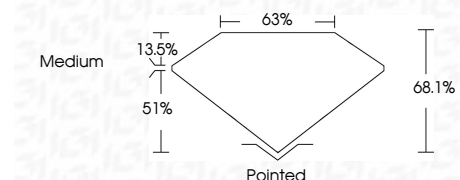
D E F G H I J Faint Very Light Light

CLARITY

Table mapping clarity grades (IF, VVS, VS, SI, I) to their descriptions (Internally Flawless, Very Very Slightly Included, etc.).



September 14, 2024
IGI Report Number LG652446017
Description LABORATORY GROWN DIAMOND
Shape and Cutting Style CUT CORNERED RECTANGULAR MODIFIED BRILLIANT
Measurements 9.02 X 6.17 X 4.20 MM
GRADING RESULTS
Carat Weight 2.04 CARATS
Color Grade G
Clarity Grade VS 1



ADDITIONAL GRADING INFORMATION

Polish EXCELLENT
Symmetry EXCELLENT
Fluorescence NONE
Inscription(s) LG652446017

Comments: This Laboratory Grown Diamond was created by Chemical Vapor Deposition (CVD) growth process. Type IIa



September 14, 2024
IGI Report No. LG652446017
CUT CORNERED RECT. MODIFIED BRILLIANT
9.02 X 6.17 X 4.20 MM
2.04 CARATS
G
VS 1
68.1%
63%
Medium
Pointed
EXCELLENT
EXCELLENT
NONE
IGI LG652446017
Comments: This Laboratory Grown Diamond was created by Chemical Vapor Deposition (CVD) growth process. Type IIa