



**ELECTRONIC COPY**

LG652446445  
Report verification at igi.org



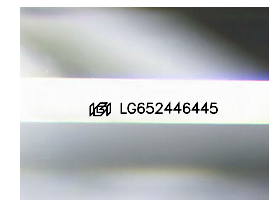
September 21, 2024  
IGI Report Number **LG652446445**  
Description **LABORATORY GROWN DIAMOND**

Shape and Cutting Style **CUT CORNERED  
RECTANGULAR MODIFIED  
BRILLIANT**

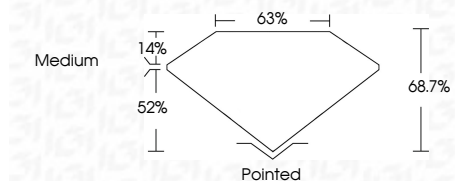
Measurements **6.90 X 4.83 X 3.32 MM**

**GRADING RESULTS**

Carat Weight **1.04 CARAT**  
Color Grade **FANCY YELLOW**  
Clarity Grade **VS 2**



Sample Image Used



**ADDITIONAL GRADING INFORMATION**

Polish **EXCELLENT**  
Symmetry **EXCELLENT**  
Fluorescence **NONE**  
Inscription(s) **IGI LG652446445**

Comments: This Laboratory Grown Diamond was created by Chemical Vapor Deposition (CVD) growth process.



September 21, 2024  
IGI Report No LG652446445  
CUT CORNERED RECT. MODIFIED BRILLIANT  
6.90 X 4.83 X 3.32 MM  
1.04 CARAT  
FANCY YELLOW  
VS 2  
68.7%  
52%  
Medium  
Pointed  
EXCELLENT  
EXCELLENT  
NONE  
IGI LG652446445  
Comments: This Laboratory Grown Diamond was created by Chemical Vapor Deposition (CVD) growth process.

**LABORATORY GROWN DIAMOND REPORT**

September 21, 2024  
IGI Report Number **LG652446445**  
Description **LABORATORY GROWN DIAMOND**  
Shape and Cutting Style **CUT CORNERED RECTANGULAR  
MODIFIED BRILLIANT**  
Measurements **6.90 X 4.83 X 3.32 MM**

**GRADING RESULTS**

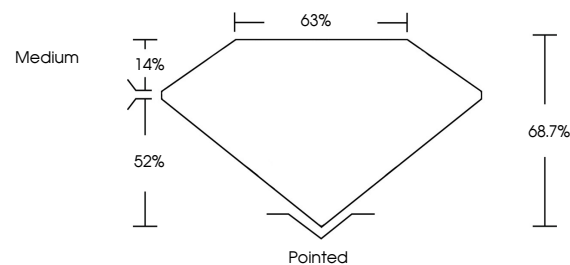
Carat Weight **1.04 CARAT**  
Color Grade **FANCY YELLOW**  
Clarity Grade **VS 2**

**ADDITIONAL GRADING INFORMATION**

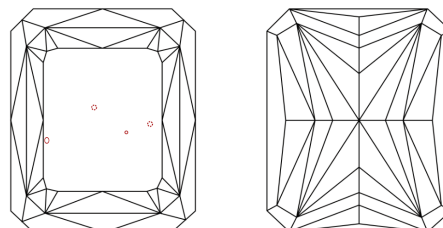
Polish **EXCELLENT**  
Symmetry **EXCELLENT**  
Fluorescence **NONE**  
Inscription(s) **IGI LG652446445**

Comments: This Laboratory Grown Diamond was created by Chemical Vapor Deposition (CVD) growth process.

**PROPORTIONS**



**CLARITY CHARACTERISTICS**



**KEY TO SYMBOLS**

Red symbols indicate internal characteristics.  
Green symbols indicate external characteristics.

**COLOR**

D E F G H I J Faint Very Light Light

**CLARITY**

IF	VS 1-2	VS 1-2	SI 1-2	I 1-3
Internally Flawless	Very Very Slightly Included	Very Slightly Included	Slightly Included	Included

