



ELECTRONIC COPY

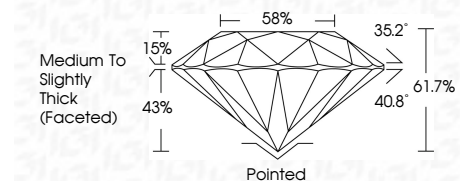
LG652453161
Report verification at igi.org



October 9, 2024
IGI Report Number LG652453161
Description LABORATORY GROWN DIAMOND
Shape and Cutting Style ROUND BRILLIANT
Measurements 8.02 - 8.10 X 4.97 MM

GRADING RESULTS

Carat Weight 2.00 CARATS
Color Grade E
Clarity Grade VVS 2
Cut Grade IDEAL

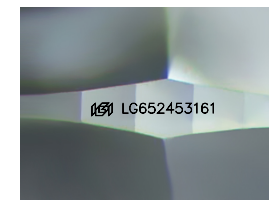


ADDITIONAL GRADING INFORMATION

Polish EXCELLENT
Symmetry EXCELLENT
Fluorescence NONE
Inscription(s) IGI LG652453161
Comments: This Laboratory Grown Diamond was created by Chemical Vapor Deposition (CVD) growth process. Type IIa

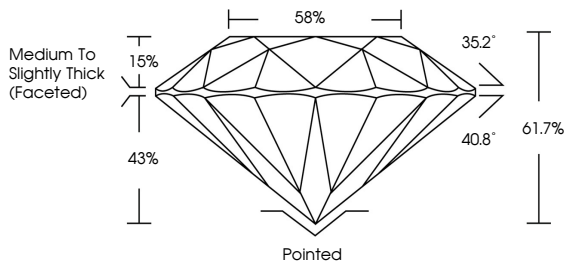


October 9, 2024
IGI Report No LG652453161
ROUND BRILLIANT
8.02 - 8.10 X 4.97 MM
2.00 CARATS E
Color Grade VVS 2
Clarity Grade IDEAL
Depth 61.7%
Table 58%
Medium To Slightly Thick (Faceted)
Cutler Pointed
Polish EXCELLENT
Symmetry EXCELLENT
Fluorescence NONE
Inscription(s) IGI LG652453161
Comments: This Laboratory Grown Diamond was created by Chemical Vapor Deposition (CVD) growth process. Type IIa

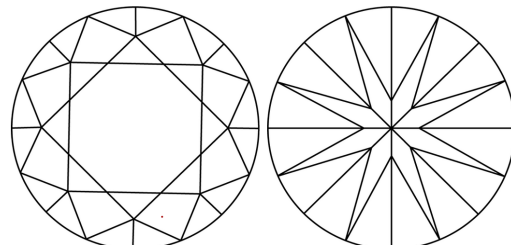


Sample Image Used

PROPORTIONS



CLARITY CHARACTERISTICS



KEY TO SYMBOLS

Red symbols indicate internal characteristics.
Green symbols indicate external characteristics.

COLOR

D E F G H I J Faint Very Light Light

CLARITY

IF VVS 1-2 VS 1-2 SI 1-2 I 1-3
Internally Flawless Very Very Slightly Included Very Slightly Included Slightly Included Included



October 9, 2024
IGI Report Number LG652453161
Description LABORATORY GROWN DIAMOND
Shape and Cutting Style ROUND BRILLIANT
Measurements 8.02 - 8.10 X 4.97 MM
GRADING RESULTS
Carat Weight 2.00 CARATS
Color Grade E
Clarity Grade VVS 2
Cut Grade IDEAL
ADDITIONAL GRADING INFORMATION
Polish EXCELLENT
Symmetry EXCELLENT
Fluorescence NONE
Inscription(s) IGI LG652453161

Comments: This Laboratory Grown Diamond was created by Chemical Vapor Deposition (CVD) growth process. Type IIa