



ELECTRONIC COPY

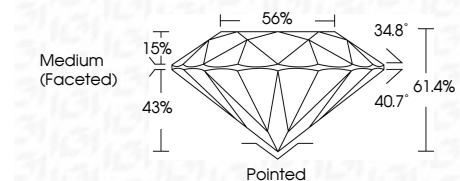
LG652453271
Report verification at igi.org



October 10, 2024
IGI Report Number LG652453271
Description LABORATORY GROWN DIAMOND
Shape and Cutting Style ROUND BRILLIANT
Measurements 8.77 - 8.81 X 5.40 MM

GRADING RESULTS

Carat Weight 2.54 CARATS
Color Grade F
Clarity Grade VVS 2
Cut Grade IDEAL



ADDITIONAL GRADING INFORMATION

Polish EXCELLENT
Symmetry EXCELLENT
Fluorescence NONE
Inscription(s) IGI LG652453271
Comments: This Laboratory Grown Diamond was created by Chemical Vapor Deposition (CVD) growth process. Type IIa



Table with 2 columns: Property and Value. Includes Carat Weight (2.54 CARATS), Color Grade (F), Clarity Grade (VVS 2), Depth (61.4%), Girdle (Medium (Faceted)), and Cut (Pointed EXCELLENT).

October 10, 2024
IGI Report No LG652453271
ROUND BRILLIANT
8.77 - 8.81 X 5.40 MM
2.54 CARATS
F
VVS 2
IDEAL
61.4%
56%
Medium (Faceted)
Pointed
EXCELLENT
EXCELLENT
NONE
IGI LG652453271
Comments: This Laboratory Grown Diamond was created by Chemical Vapor Deposition (CVD) growth process. Type IIa

October 10, 2024
IGI Report Number LG652453271
Description LABORATORY GROWN DIAMOND
Shape and Cutting Style ROUND BRILLIANT
Measurements 8.77 - 8.81 X 5.40 MM

GRADING RESULTS

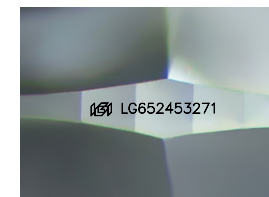
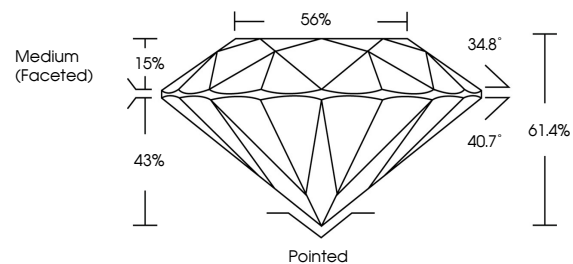
Carat Weight 2.54 CARATS
Color Grade F
Clarity Grade VVS 2
Cut Grade IDEAL

ADDITIONAL GRADING INFORMATION

Polish EXCELLENT
Symmetry EXCELLENT
Fluorescence NONE
Inscription(s) IGI LG652453271

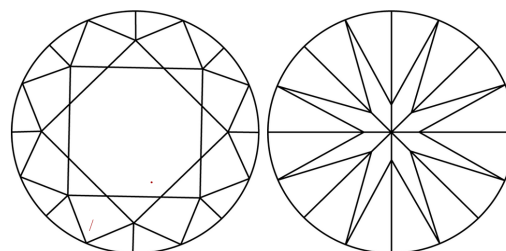
Comments: This Laboratory Grown Diamond was created by Chemical Vapor Deposition (CVD) growth process. Type IIa

PROPORTIONS



Sample Image Used

CLARITY CHARACTERISTICS



KEY TO SYMBOLS

Red symbols indicate internal characteristics.
Green symbols indicate external characteristics.

COLOR

D E F G H I J Faint Very Light Light

CLARITY

Table with 5 columns: Clarity Grade (IF, VS 1-2, VS 1-2, SI 1-2, I 1-3) and Description (Internally Flawless, Very Very Slightly Included, Very Slightly Included, Slightly Included, Included).

