



**ELECTRONIC COPY**

LG652453322  
Report verification at [igi.org](http://igi.org)



October 11, 2024

IGI Report Number **LG652453322**

Description **LABORATORY GROWN DIAMOND**

Shape and Cutting Style **ROUND BRILLIANT**

Measurements **13.14 - 13.25 X 7.81 MM**

**GRADING RESULTS**

Carat Weight **8.50 CARATS**

Color Grade **F**

Clarity Grade **VS 1**

Cut Grade **EXCELLENT**

October 11, 2024  
IGI Report Number **LG652453322**  
Description **LABORATORY GROWN DIAMOND**  
Shape and Cutting Style **ROUND BRILLIANT**  
Measurements **13.14 - 13.25 X 7.81 MM**

**GRADING RESULTS**

Carat Weight **8.50 CARATS**

Color Grade **F**

Clarity Grade **VS 1**

Cut Grade **EXCELLENT**

**ADDITIONAL GRADING INFORMATION**

Polish **EXCELLENT**

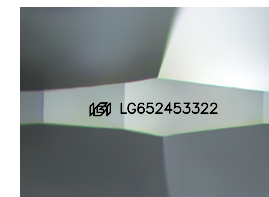
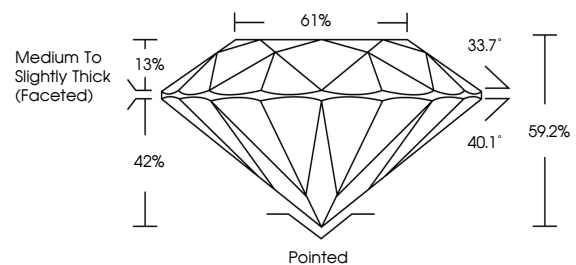
Symmetry **EXCELLENT**

Fluorescence **NONE**

Inscription(s) **LG652453322**

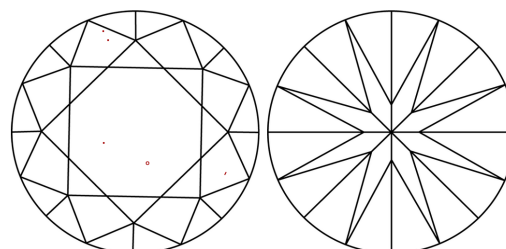
Comments: This Laboratory Grown Diamond was created by Chemical Vapor Deposition (CVD) growth process.  
Type IIa

**PROPORTIONS**



Sample Image Used

**CLARITY CHARACTERISTICS**



**KEY TO SYMBOLS**

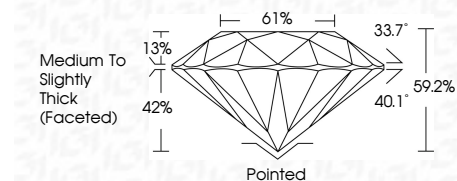
Red symbols indicate internal characteristics.  
Green symbols indicate external characteristics.

**COLOR**

D E F G H I J Faint Very Light Light

**CLARITY**

IF	VS <sup>1-2</sup>	VS <sup>1-2</sup>	SI <sup>1-2</sup>	I <sup>1-3</sup>
Internally Flawless	Very Very Slightly Included	Very Slightly Included	Slightly Included	Included



**ADDITIONAL GRADING INFORMATION**

Polish **EXCELLENT**

Symmetry **EXCELLENT**

Fluorescence **NONE**

Inscription(s) **LG652453322**

Comments: This Laboratory Grown Diamond was created by Chemical Vapor Deposition (CVD) growth process.  
Type IIa



**IGI**



October 11, 2024  
IGI Report No **LG652453322**  
**ROUND BRILLIANT**

**13.14 - 13.25 X 7.81 MM**

**8.50 CARATS**  
F

**EXCELLENT**  
VS 1

**EXCELLENT**  
61%  
Medium To Slightly Thick (Faceted)

**EXCELLENT**  
Pointed

**EXCELLENT**  
Symmetry

**NONE**  
Fluorescence

**NONE**  
Inscriptions(s)  
 LG652453322

Comments: This Laboratory Grown Diamond was created by Chemical Vapor Deposition (CVD) growth process.  
Type IIa