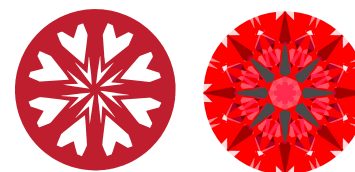




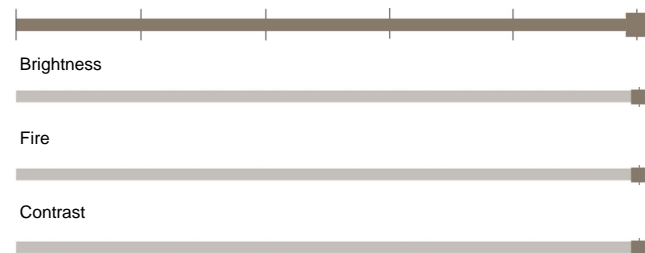
Light Performance Grade: Exceptional



Ideal-Scope representation

Low Moderate High Superior Exceptional

Light Performance



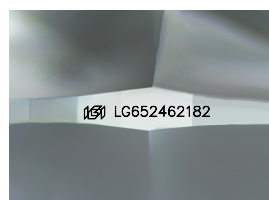
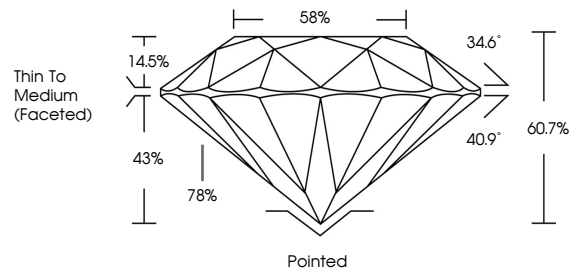
COLOR

D E F G H I J Faint Very Light Light

CLARITY

IF	VS ¹⁻²	VS ¹⁻²	SI ¹⁻²	I ¹⁻³
Internally Flawless	Very Very Slightly Included	Very Slightly Included	Slightly Included	Included

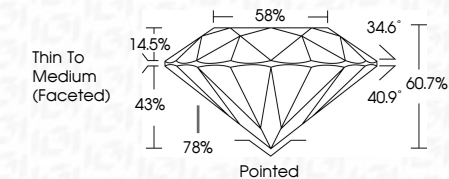
PROPORTIONS



Sample Image Used



September 16, 2024
IGI Report Number **LG652462182**
Description **LABORATORY GROWN DIAMOND**
Shape and Cutting Style **ROUND BRILLIANT**
Measurements **7.59 - 7.65 X 4.62 MM**
GRADING RESULTS
Carat Weight **1.63 CARAT**
Color Grade **F**
Clarity Grade **INTERNALLY FLAWLESS**
Cut Grade **IDEAL**



ADDITIONAL GRADING INFORMATION

Polish **EXCELLENT**
Symmetry **EXCELLENT**
Fluorescence **NONE**
Inscription(s) **IGI LG652462182**

Comments: HEARTS & ARROWS
As Grown - No indication of post-growth treatment.
This Laboratory Grown Diamond was created by High Pressure High Temperature (HPHT) growth process.
Type II



IGI

ELECTRONIC COPY

LABORATORY GROWN DIAMOND REPORT

September 16, 2024
IGI Report Number **LG652462182**
Description **LABORATORY GROWN DIAMOND**
Shape and Cutting Style **ROUND BRILLIANT**
Measurements **7.59 - 7.65 x 4.62 mm**

GRADING RESULTS

Carat Weight **1.63 CARAT**
Color Grade **F**
Clarity Grade **INTERNALLY FLAWLESS**
Cut Grade **IDEAL**

ADDITIONAL GRADING INFORMATION

Polish **EXCELLENT**
Symmetry **EXCELLENT**
Fluorescence **NONE**
Inscription(s) **IGI LG652462182**

Comments: HEARTS & ARROWS
As Grown - No indication of post-growth treatment.
This Laboratory Grown Diamond was created by High Pressure High Temperature (HPHT) growth process.
Type II



September 16, 2024
IGI Report No. **LG652462182**
ROUND BRILLIANT
7.59 - 7.65 X 4.62 MM
Carat Weight **1.63 CARAT**
Color Grade **F**
Clarity Grade **IF**
Cut Grade **IDEAL**
Depth **60.7%**
Table **58%**
Girdle **Thin To Medium (Faceted)**
Culet **Pointed**
Polish **EXCELLENT**
Symmetry **EXCELLENT**
Fluorescence **NONE**
Inscription(s) **IGI LG652462182**
Comments: **HEARTS & ARROWS**
As Grown - No indication of post-growth treatment.
This Laboratory Grown Diamond was created by High Pressure High Temperature (HPHT) growth process.