



ELECTRONIC COPY

LG652471099
Report verification at igi.org



September 26, 2024
IGI Report Number **LG652471099**
Description **LABORATORY GROWN DIAMOND**
Shape and Cutting Style **CUT CORNERED
RECTANGULAR MODIFIED
BRILLIANT**
Measurements **8.13 X 5.72 X 3.94 MM**
GRADING RESULTS
Carat Weight **1.78 CARAT**
Color Grade **FANCY INTENSE BROWNISH
PINK**
Clarity Grade **VS 1**

LABORATORY GROWN DIAMOND REPORT

September 26, 2024
IGI Report Number **LG652471099**
Description **LABORATORY GROWN DIAMOND**
Shape and Cutting Style **CUT CORNERED RECTANGULAR
MODIFIED BRILLIANT**
Measurements **8.13 X 5.72 X 3.94 MM**

GRADING RESULTS

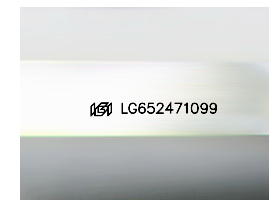
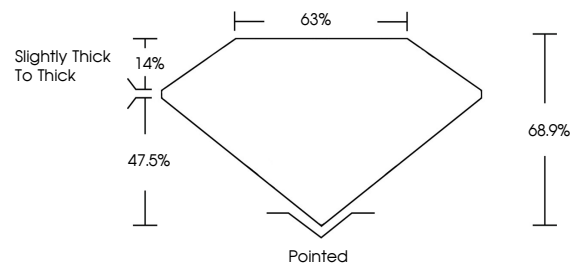
Carat Weight **1.78 CARAT**
Color Grade **FANCY INTENSE BROWNISH
PINK**
Clarity Grade **VS 1**

ADDITIONAL GRADING INFORMATION

Polish **EXCELLENT**
Symmetry **EXCELLENT**
Fluorescence **SLIGHT**
Inscription(s) **(LGI) LG652471099**

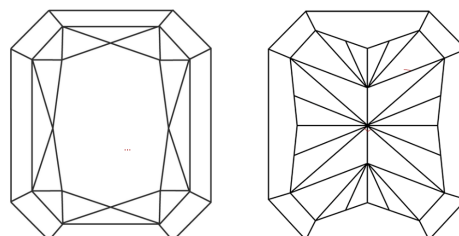
Comments: This Laboratory Grown Diamond was created by Chemical Vapor Deposition (CVD) growth process.
Indications of post-growth treatment.

PROPORTIONS



Sample Image Used

CLARITY CHARACTERISTICS



KEY TO SYMBOLS

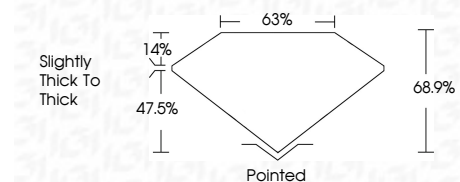
Red symbols indicate internal characteristics.
Green symbols indicate external characteristics.

COLOR

D E F G H I J Faint Very Light Light

CLARITY

IF	VS ¹⁻²	VS ¹⁻²	SI ¹⁻²	I ¹⁻³
Internally Flawless	Very Very Slightly Included	Very Slightly Included	Slightly Included	Included



ADDITIONAL GRADING INFORMATION

Polish **EXCELLENT**
Symmetry **EXCELLENT**
Fluorescence **SLIGHT**
Inscription(s) **(LGI) LG652471099**
Comments: This Laboratory Grown Diamond was created by Chemical Vapor Deposition (CVD) growth process.
Indications of post-growth treatment.



September 26, 2024
IGI Report No LG652471099
CUT CORNERED RECT. MODIFIED BRILLIANT
8.13 X 5.72 X 3.94 MM
1.78 CARAT
FANCY INTENSE BROWNISH PINK
VS 1
68.9%
63%
Slightly thick to thick
Pointed
EXCELLENT
EXCELLENT
SLIGHT
(LGI) LG652471099
Comments: This Laboratory Grown Diamond was created by Chemical Vapor Deposition (CVD) growth process.
Indications of post-growth treatment.