



ELECTRONIC COPY

LG652473312
Report verification at igi.org



September 19, 2024
IGI Report Number LG652473312
Description LABORATORY GROWN DIAMOND
Shape and Cutting Style ROUND BRILLIANT
Measurements 6.48 - 6.54 X 3.91 MM
GRADING RESULTS
Carat Weight 1.02 CARAT
Color Grade D
Clarity Grade VS 2
Cut Grade EXCELLENT

September 19, 2024
IGI Report Number LG652473312
Description LABORATORY GROWN DIAMOND
Shape and Cutting Style ROUND BRILLIANT
Measurements 6.48 - 6.54 X 3.91 MM

GRADING RESULTS

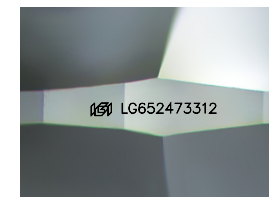
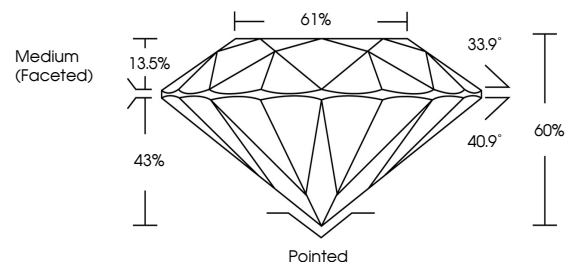
Carat Weight 1.02 CARAT
Color Grade D
Clarity Grade VS 2
Cut Grade EXCELLENT

ADDITIONAL GRADING INFORMATION

Polish EXCELLENT
Symmetry EXCELLENT
Fluorescence NONE
Inscription(s) IGI LG652473312

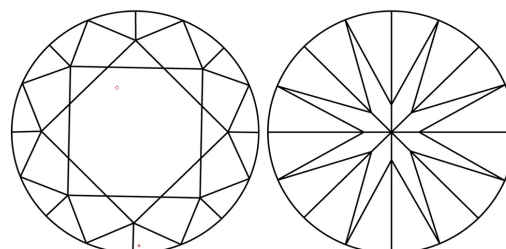
Comments: This Laboratory Grown Diamond was created by Chemical Vapor Deposition (CVD) growth process. Type IIa

PROPORTIONS



Sample Image Used

CLARITY CHARACTERISTICS



KEY TO SYMBOLS

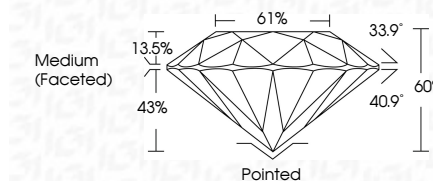
Red symbols indicate internal characteristics.
Green symbols indicate external characteristics.

COLOR

D E F G H I J Faint Very Light Light

CLARITY

IF VS 1-2 VS 1-2 SI 1-2 I 1-3
Internally Flawless Very Very Slightly Included Very Slightly Included Slightly Included Included



ADDITIONAL GRADING INFORMATION

Polish EXCELLENT
Symmetry EXCELLENT
Fluorescence NONE
Inscription(s) IGI LG652473312
Comments: This Laboratory Grown Diamond was created by Chemical Vapor Deposition (CVD) growth process. Type IIa



IGI



September 19, 2024
IGI Report No LG652473312
ROUND BRILLIANT
6.48 - 6.54 X 3.91 MM
1.02 CARAT
D
VS 2
EXCELLENT
61%
Medium (Faceted)
Pointed
EXCELLENT
EXCELLENT
NONE
IGI LG652473312
Comments: This Laboratory Grown Diamond was created by Chemical Vapor Deposition (CVD) growth process. Type IIa