



ELECTRONIC COPY

LABORATORY GROWN DIAMOND REPORT

September 18, 2024
IGI Report Number LG652475040
Description LABORATORY GROWN DIAMOND
Shape and Cutting Style PRINCESS CUT
Measurements 6.14 X 6.13 X 4.43 MM

GRADING RESULTS

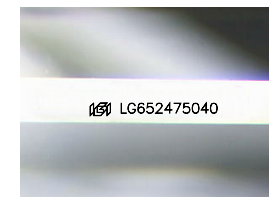
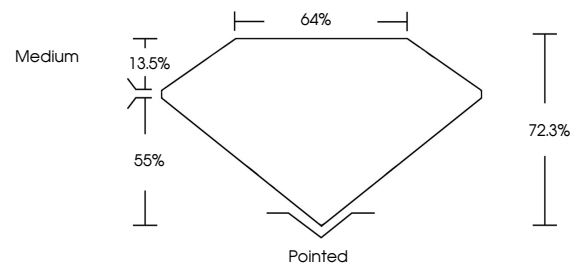
Carat Weight 1.50 CARAT
Color Grade D
Clarity Grade VVS 2

ADDITIONAL GRADING INFORMATION

Polish EXCELLENT
Symmetry EXCELLENT
Fluorescence NONE
Inscription(s) IGI LG652475040

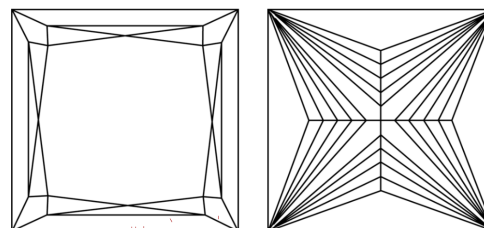
Comments: As Grown - No indication of post-growth treatment.
This Laboratory Grown Diamond was created by High Pressure High Temperature (HPHT) growth process.
Type II

PROPORTIONS



Sample Image Used

CLARITY CHARACTERISTICS



KEY TO SYMBOLS

Red symbols indicate internal characteristics.
Green symbols indicate external characteristics.

COLOR

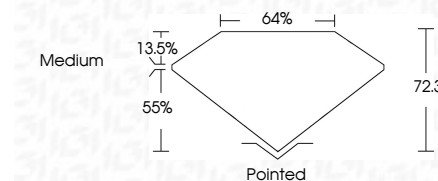
D E F G H I J Faint Very Light Light

CLARITY

IF VS 1-2 VS 1-2 SI 1-2 I 1-3
Internally Flawless Very Very Slightly Included Very Slightly Included Slightly Included Included



September 18, 2024
IGI Report Number LG652475040
Description LABORATORY GROWN DIAMOND
Shape and Cutting Style PRINCESS CUT
Measurements 6.14 X 6.13 X 4.43 MM
GRADING RESULTS
Carat Weight 1.50 CARAT
Color Grade D
Clarity Grade VVS 2



ADDITIONAL GRADING INFORMATION

Polish EXCELLENT
Symmetry EXCELLENT
Fluorescence NONE
Inscription(s) IGI LG652475040
Comments: As Grown - No indication of post-growth treatment.
This Laboratory Grown Diamond was created by High Pressure High Temperature (HPHT) growth process.
Type II



IGI



September 18, 2024
IGI Report No. LG652475040
PRINCESS CUT
6.14 X 6.13 X 4.43 MM
1.50 CARAT
D
Color Grade
VVS 2
Depth 72.3%
Table 13.5%
Girdle 64%
Medium
Pointed
EXCELLENT
EXCELLENT
NONE
IGI LG652475040
Comments: As Grown - No indication of post-growth treatment.
This Laboratory Grown Diamond was created by High Pressure High Temperature (HPHT) growth process.
Type II