



ELECTRONIC COPY

LG652476991
Report verification at igi.org



September 19, 2024

IGI Report Number LG652476991

Description LABORATORY GROWN DIAMOND

Shape and Cutting Style ROUND BRILLIANT

Measurements 6.44 - 6.48 X 3.97 MM

GRADING RESULTS

Carat Weight 1.02 CARAT

Color Grade D

Clarity Grade VVS 1

Cut Grade IDEAL

September 19, 2024
IGI Report Number LG652476991
Description LABORATORY GROWN DIAMOND
Shape and Cutting Style ROUND BRILLIANT
Measurements 6.44 - 6.48 X 3.97 MM

GRADING RESULTS

Carat Weight 1.02 CARAT

Color Grade D

Clarity Grade VVS 1

Cut Grade IDEAL

ADDITIONAL GRADING INFORMATION

Polish EXCELLENT

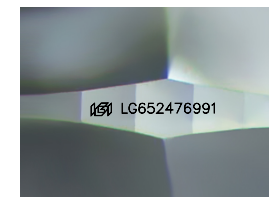
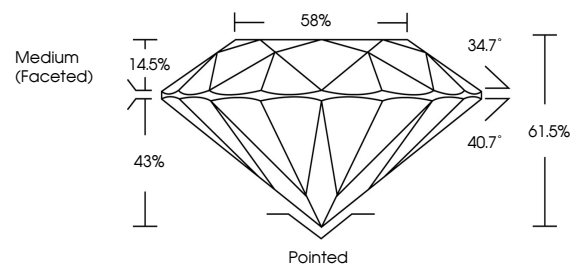
Symmetry EXCELLENT

Fluorescence NONE

Inscription(s) IGI LG652476991

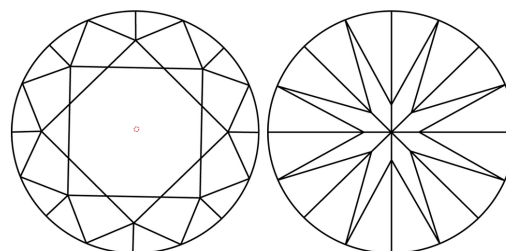
Comments: HEARTS & ARROWS
As Grown - No indication of post-growth treatment.
This Laboratory Grown Diamond was created by High Pressure High Temperature (HPHT) growth process.
Type II

PROPORTIONS



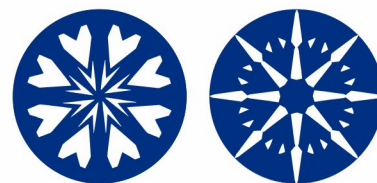
Sample Image Used

CLARITY CHARACTERISTICS



KEY TO SYMBOLS

Red symbols indicate internal characteristics.
Green symbols indicate external characteristics.

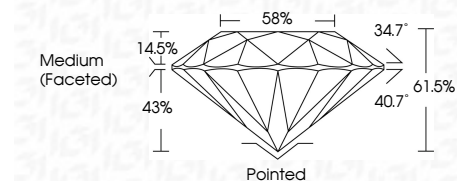


COLOR

D E F G H I J Faint Very Light Light

CLARITY

IF VVS 1-2 VS 1-2 SI 1-2 I 1-3
Internally Flawless Very Very Slightly Included Very Slightly Included Slightly Included Included



ADDITIONAL GRADING INFORMATION

Polish EXCELLENT

Symmetry EXCELLENT

Fluorescence NONE

Inscription(s) IGI LG652476991

Comments: HEARTS & ARROWS
As Grown - No indication of post-growth treatment.
This Laboratory Grown Diamond was created by High Pressure High Temperature (HPHT) growth process.
Type II



Summary table of diamond characteristics: September 19, 2024, IGI Report No LG652476991, ROUND BRILLIANT, 6.44 - 6.48 X 3.97 MM, 1.02 CARAT, D, VVS 1, IDEAL, 61.5%, 58%, Medium (Faceted), Polished, EXCELLENT, EXCELLENT, NONE, IGI LG652476991