



ELECTRONIC COPY

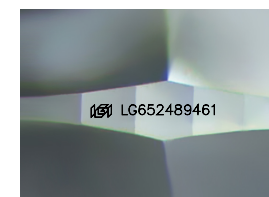
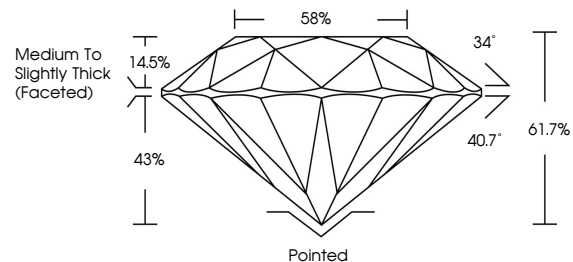
LG652489461
Report verification at igi.org



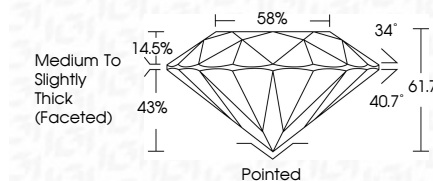
September 19, 2024
IGI Report Number LG652489461
Description LABORATORY GROWN DIAMOND
Shape and Cutting Style ROUND BRILLIANT
Measurements 6.42 - 6.47 X 3.98 MM
GRADING RESULTS
Carat Weight 1.03 CARAT
Color Grade G
Clarity Grade VS 1
Cut Grade EXCELLENT

September 19, 2024
IGI Report Number LG652489461
Description LABORATORY GROWN DIAMOND
Shape and Cutting Style ROUND BRILLIANT
Measurements 6.42 - 6.47 X 3.98 MM
GRADING RESULTS
Carat Weight 1.03 CARAT
Color Grade G
Clarity Grade VS 1
Cut Grade EXCELLENT

PROPORTIONS



Sample Image Used



ADDITIONAL GRADING INFORMATION
Polish EXCELLENT
Symmetry EXCELLENT
Fluorescence NONE
Inscription(s) LG652489461

ADDITIONAL GRADING INFORMATION
Polish EXCELLENT
Symmetry EXCELLENT
Fluorescence NONE
Inscription(s) LG652489461
Comments: This Laboratory Grown Diamond was created by Chemical Vapor Deposition (CVD) growth process. Type IIa

COLOR

D E F G H I J Faint Very Light Light

CLARITY

IF VS 1-2 VS 1-2 SI 1-2 I 1-3
Internally Flawless Very Very Slightly Included Very Slightly Included Slightly Included Included



IGI

September 19, 2024
IGI Report No LG652489461
ROUND BRILLIANT
6.42 - 6.47 X 3.98 MM
1.03 CARAT
Color Grade G
Clarity Grade VS 1
Depth 61.7%
Table 58%
Medium To Slightly Thick (Faceted)
Pointed
Polish EXCELLENT
Symmetry EXCELLENT
Fluorescence NONE
Inscriptions(s) IGI LG652489461
Comments: This Laboratory Grown Diamond was created by Chemical Vapor Deposition (CVD) growth process. Type IIa