



ELECTRONIC COPY

LG652491887
Report verification at igi.org



September 25, 2024

IGI Report Number **LG652491887**

Description **LABORATORY GROWN DIAMOND**

Shape and Cutting Style **CUT CORNERED
RECTANGULAR MODIFIED
BRILLIANT**

Measurements **7.71 X 5.52 X 3.81 MM**

GRADING RESULTS

Carat Weight **1.58 CARAT**

Color Grade **FANCY VIVID PINK**

Clarity Grade **VVS 2**

September 25, 2024
IGI Report Number **LG652491887**
Description **LABORATORY GROWN DIAMOND**
Shape and Cutting Style **CUT CORNERED RECTANGULAR
MODIFIED BRILLIANT**
Measurements **7.71 X 5.52 X 3.81 MM**

GRADING RESULTS

Carat Weight **1.58 CARAT**

Color Grade **FANCY VIVID PINK**

Clarity Grade **VVS 2**

ADDITIONAL GRADING INFORMATION

Polish **EXCELLENT**

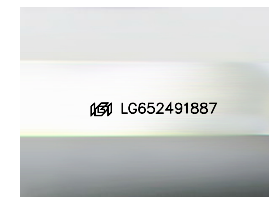
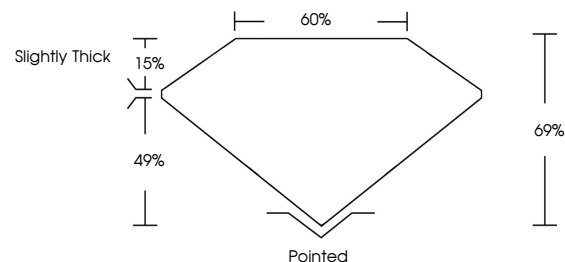
Symmetry **EXCELLENT**

Fluorescence **SLIGHT**

Inscription(s) **IGI LG652491887**

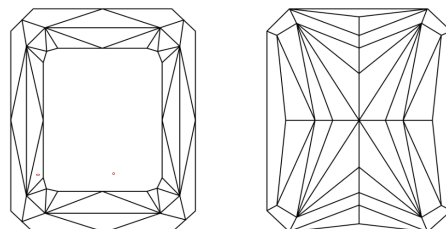
Comments: This Laboratory Grown Diamond was created by Chemical Vapor Deposition (CVD) growth process. Indications of post-growth treatment.

PROPORTIONS



Sample Image Used

CLARITY CHARACTERISTICS



KEY TO SYMBOLS

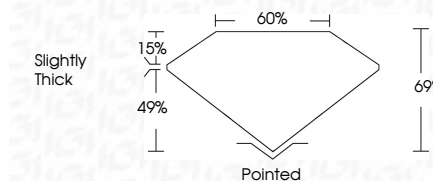
Red symbols indicate internal characteristics.
Green symbols indicate external characteristics.

COLOR

D E F G H I J Faint Very Light Light

CLARITY

IF	VS ¹⁻²	VS ¹⁻²	SI ¹⁻²	I ¹⁻³
Internally Flawless	Very Very Slightly Included	Very Slightly Included	Slightly Included	Included



ADDITIONAL GRADING INFORMATION

Polish **EXCELLENT**

Symmetry **EXCELLENT**

Fluorescence **SLIGHT**

Inscription(s) **IGI LG652491887**

Comments: This Laboratory Grown Diamond was created by Chemical Vapor Deposition (CVD) growth process. Indications of post-growth treatment.



IGI



September 25, 2024
IGI Report No. LG652491887
CUT CORNERED RECT. MODIFIED BRILLIANT
1.58 CARAT
FANCY VIVID PINK
VVS 2
69%
60%
Slightly Thick
Pointed
EXCELLENT
EXCELLENT
SLIGHT
IGI LG652491887

Comments: This Laboratory Grown Diamond was created by Chemical Vapor Deposition (CVD) growth process. Indications of post-growth treatment.