



ELECTRONIC COPY

LG652491920
Report verification at igi.org



September 25, 2024

IGI Report Number **LG652491920**

Description **LABORATORY GROWN DIAMOND**

Shape and Cutting Style **CUT CORNERED
RECTANGULAR MODIFIED
BRILLIANT**

Measurements **6.81 X 4.80 X 3.31 MM**

GRADING RESULTS

Carat Weight **1.06 CARAT**

Color Grade **FANCY VIVID PINK**

Clarity Grade **VVS 2**

September 25, 2024

IGI Report Number **LG652491920**

Description **LABORATORY GROWN DIAMOND**

Shape and Cutting Style **CUT CORNERED RECTANGULAR
MODIFIED BRILLIANT**

Measurements **6.81 X 4.80 X 3.31 MM**

GRADING RESULTS

Carat Weight **1.06 CARAT**

Color Grade **FANCY VIVID PINK**

Clarity Grade **VVS 2**

ADDITIONAL GRADING INFORMATION

Polish **EXCELLENT**

Symmetry **EXCELLENT**

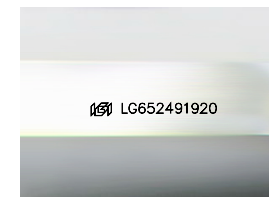
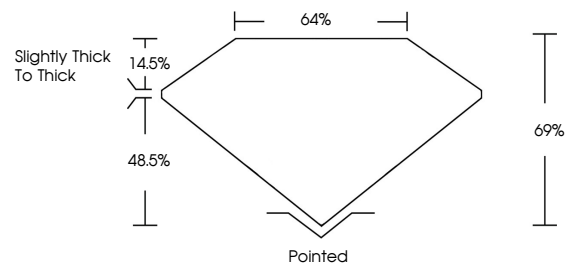
Fluorescence **SLIGHT**

Inscription(s) **IGI LG652491920**

Comments: This Laboratory Grown Diamond was created by Chemical Vapor Deposition (CVD) growth process.

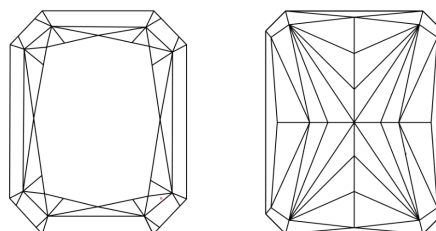
Indications of post-growth treatment.

PROPORTIONS



Sample Image Used

CLARITY CHARACTERISTICS



KEY TO SYMBOLS

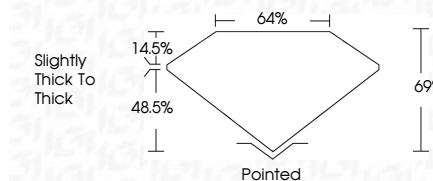
Red symbols indicate internal characteristics.
Green symbols indicate external characteristics.

COLOR

D E F G H I J Faint Very Light Light

CLARITY

IF	VS ¹⁻²	VS ¹⁻²	SI ¹⁻²	I ¹⁻³
Internally Flawless	Very Very Slightly Included	Very Slightly Included	Slightly Included	Included



ADDITIONAL GRADING INFORMATION

Polish **EXCELLENT**

Symmetry **EXCELLENT**

Fluorescence **SLIGHT**

Inscription(s) **IGI LG652491920**

Comments: This Laboratory Grown Diamond was created by Chemical Vapor Deposition (CVD) growth process. Indications of post-growth treatment.



IGI



September 25, 2024
IGI Report No. LG652491920
CUT CORNERED RECT. MODIFIED BRILLIANT
6.81 X 4.80 X 3.31 MM
Carat Weight 1.06 CARAT
Color Grade FANCY VIVID PINK
Clarity Grade VVS 2
Depth 69%
Table 14.5%
Girdle Slightly thick to thick
Culet Pointed
Polish EXCELLENT
Symmetry EXCELLENT
Fluorescence SLIGHT
Inscription(s) IGI LG652491920
Comments: This Laboratory Grown Diamond was created by Chemical Vapor Deposition (CVD) growth process. Indications of post-growth treatment.