



ELECTRONIC COPY

LG652493053
Report verification at igi.org



September 28, 2024
IGI Report Number: LG652493053
Description: LABORATORY GROWN DIAMOND
Shape and Cutting Style: CUT CORNERED RECTANGULAR MODIFIED BRILLIANT
Measurements: 8.18 X 5.44 X 3.52 MM
GRADING RESULTS
Carat Weight: 1.37 CARAT
Color Grade: FANCY VIVID GREEN
Clarity Grade: VS 1

LABORATORY GROWN DIAMOND REPORT

September 28, 2024
IGI Report Number: LG652493053
Description: LABORATORY GROWN DIAMOND
Shape and Cutting Style: CUT CORNERED RECTANGULAR MODIFIED BRILLIANT
Measurements: 8.18 X 5.44 X 3.52 MM

GRADING RESULTS

Carat Weight: 1.37 CARAT
Color Grade: FANCY VIVID GREEN
Clarity Grade: VS 1

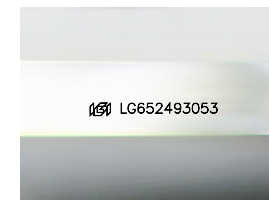
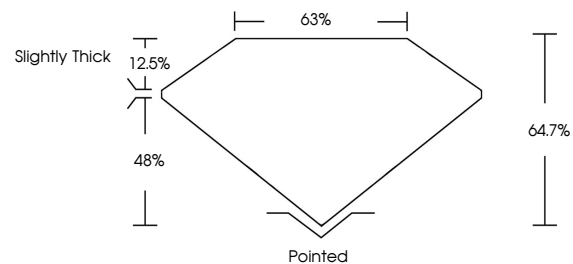
ADDITIONAL GRADING INFORMATION

Polish: EXCELLENT
Symmetry: EXCELLENT
Fluorescence: NONE

Inscription(s): IGI LG652493053

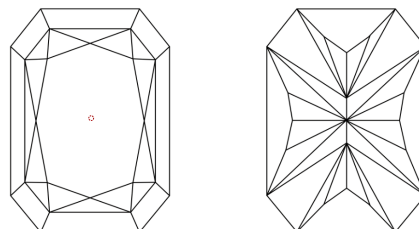
Comments: This Laboratory Grown Diamond was created by Chemical Vapor Deposition (CVD) growth process.
Indications of post-growth treatment.

PROPORTIONS



Sample Image Used

CLARITY CHARACTERISTICS



KEY TO SYMBOLS

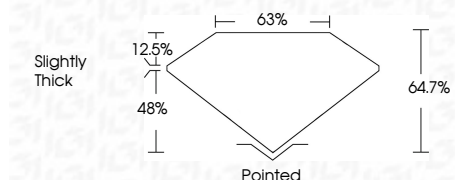
Red symbols indicate internal characteristics.
Green symbols indicate external characteristics.

COLOR

D E F G H I J Faint Very Light Light

CLARITY

Table mapping clarity grades (IF, VVS, VS, SI, I) to descriptions (Internally Flawless, Very Very Slightly Included, etc.)



ADDITIONAL GRADING INFORMATION

Polish: EXCELLENT
Symmetry: EXCELLENT
Fluorescence: NONE
Inscription(s): IGI LG652493053

Comments: This Laboratory Grown Diamond was created by Chemical Vapor Deposition (CVD) growth process.
Indications of post-growth treatment.



IGI



September 28, 2024
IGI Report No. LG652493053
CUT CORNERED RECT. MODIFIED BRILLIANT
8.18 X 5.44 X 3.52 MM
1.37 CARAT
FANCY VIVID GREEN
VS 1
64.7%
63%
Slightly Thick
Pointed
EXCELLENT
EXCELLENT
NONE
IGI LG652493053
Comments: This Laboratory Grown Diamond was created by Chemical Vapor Deposition (CVD) growth process.
Indications of post-growth treatment.