



ELECTRONIC COPY

LG652493085
Report verification at igi.org



September 19, 2024

IGI Report Number **LG652493085**

Description **LABORATORY GROWN DIAMOND**

Shape and Cutting Style **EMERALD CUT**

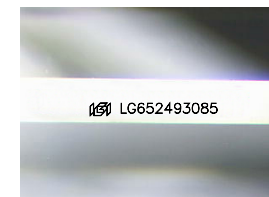
Measurements **6.60 X 4.76 X 3.31 MM**

GRADING RESULTS

Carat Weight **1.01 CARAT**

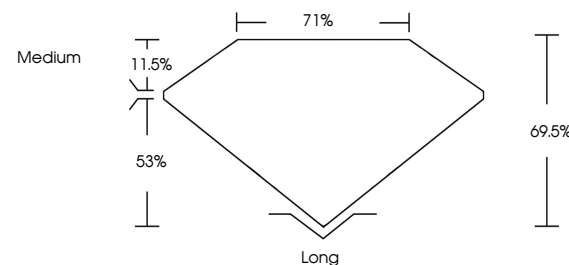
Color Grade **D**

Clarity Grade **VS 2**

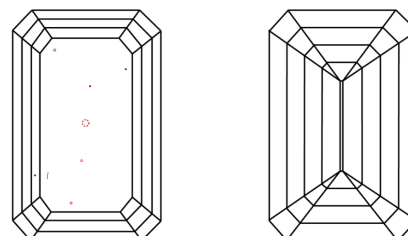


Sample Image Used

PROPORTIONS



CLARITY CHARACTERISTICS



KEY TO SYMBOLS

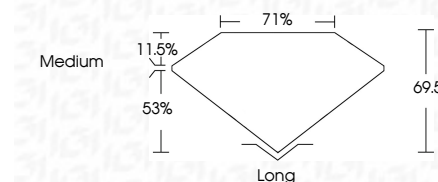
Red symbols indicate internal characteristics.
Green symbols indicate external characteristics.

COLOR

D E F G H I J Faint Very Light Light

CLARITY

IF	VS ¹⁻²	VS ¹⁻²	SI ¹⁻²	I ¹⁻³
Internally Flawless	Very Very Slightly Included	Very Slightly Included	Slightly Included	Included



ADDITIONAL GRADING INFORMATION

Polish **EXCELLENT**

Symmetry **EXCELLENT**

Fluorescence **NONE**

Inscription(s) **IGI LG652493085**

Comments: This Laboratory Grown Diamond was created by Chemical Vapor Deposition (CVD) growth process.
Type IIa



IGI



September 19, 2024
IGI Report No. LG652493085
EMERALD CUT

1.01 CARAT
D

6.60 X 4.76 X 3.31 MM
Color Grade **D**
Depth 69.5%
Table 71%
Girdle **Medium**

Clarity **VS 2**
Polish **EXCELLENT**
Symmetry **EXCELLENT**
Fluorescence **NONE**
Inscription(s) **IGI LG652493085**

Comments: This Laboratory Grown Diamond was created by Chemical Vapor Deposition (CVD) growth process.
Type IIa