



**ELECTRONIC COPY**

LG652493119  
Report verification at igi.org



September 20, 2024

IGI Report Number **LG652493119**

Description **LABORATORY GROWN DIAMOND**

Shape and Cutting Style **TRAPEZE BRILLIANT CUT**

Measurements **8.80 X 5.12 X 3.00 MM**

**GRADING RESULTS**

Carat Weight **1.01 CARAT**

Color Grade **F**

Clarity Grade **VS 1**

September 20, 2024  
IGI Report Number **LG652493119**  
Description **LABORATORY GROWN DIAMOND**  
Shape and Cutting Style **TRAPEZE BRILLIANT CUT**  
Measurements **8.80 X 5.12 X 3.00 MM**

**GRADING RESULTS**

Carat Weight **1.01 CARAT**

Color Grade **F**

Clarity Grade **VS 1**

**ADDITIONAL GRADING INFORMATION**

Polish **EXCELLENT**

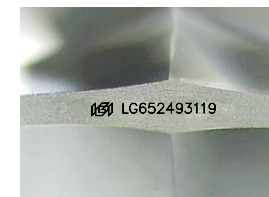
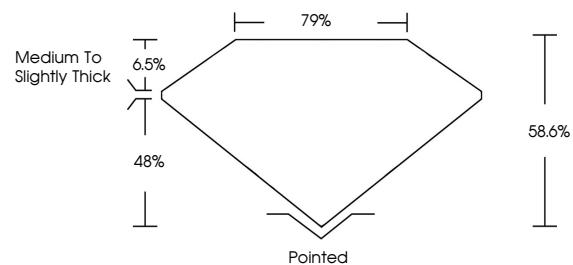
Symmetry **EXCELLENT**

Fluorescence **NONE**

Inscription(s) **LG652493119**

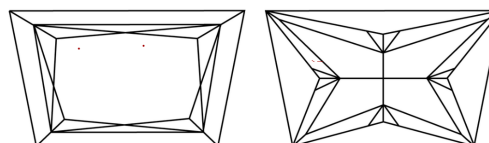
Comments: This Laboratory Grown Diamond was created by Chemical Vapor Deposition (CVD) growth process.  
Type IIa

**PROPORTIONS**



Sample Image Used

**CLARITY CHARACTERISTICS**



**KEY TO SYMBOLS**

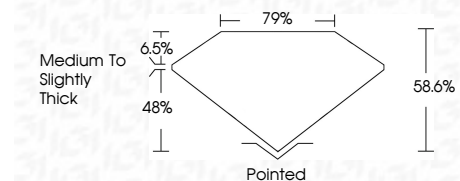
Red symbols indicate internal characteristics.  
Green symbols indicate external characteristics.

**COLOR**

D E F G H I J Faint Very Light Light

**CLARITY**

IF	VS <sup>1-2</sup>	VS <sup>1-2</sup>	SI <sup>1-2</sup>	I <sup>1-3</sup>
Internally Flawless	Very Very Slightly Included	Very Slightly Included	Slightly Included	Included



**ADDITIONAL GRADING INFORMATION**

Polish **EXCELLENT**

Symmetry **EXCELLENT**

Fluorescence **NONE**

Inscription(s) **LG652493119**

Comments: This Laboratory Grown Diamond was created by Chemical Vapor Deposition (CVD) growth process.  
Type IIa



**IGI**



September 20, 2024  
IGI Report No **LG652493119**  
**TRAPEZE BRILLIANT CUT**  
**8.80 X 5.12 X 3.00 MM**  
Carat Weight **1.01 CARAT**  
Color Grade **F**  
Clarity Grade **VS 1**  
Depth **58.6%**  
Table **79%**  
Girdle **Medium to Slightly Thick**  
Culet **Pointed**  
Polish **EXCELLENT**  
Symmetry **EXCELLENT**  
Fluorescence **NONE**  
Inscription(s) **LG652493119**  
Comments: This Laboratory Grown Diamond was created by Chemical Vapor Deposition (CVD) growth process.  
Type IIa