



ELECTRONIC COPY

LG652493691
Report verification at igi.org



September 19, 2024

IGI Report Number LG652493691

Description LABORATORY GROWN DIAMOND

Shape and Cutting Style ROUND BRILLIANT

Measurements 8.22 - 8.28 X 4.81 MM

GRADING RESULTS

Carat Weight 2.01 CARATS

Color Grade F

Clarity Grade VS 1

Cut Grade EXCELLENT

September 19, 2024
IGI Report Number LG652493691
Description LABORATORY GROWN DIAMOND
Shape and Cutting Style ROUND BRILLIANT
Measurements 8.22 - 8.28 X 4.81 MM

GRADING RESULTS

Carat Weight 2.01 CARATS

Color Grade F

Clarity Grade VS 1

Cut Grade EXCELLENT

ADDITIONAL GRADING INFORMATION

Polish EXCELLENT

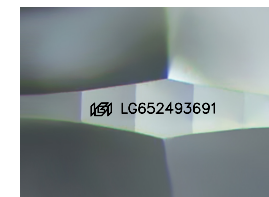
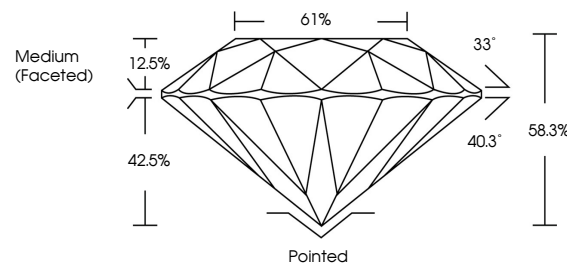
Symmetry EXCELLENT

Fluorescence NONE

Inscription(s) IGI LG652493691

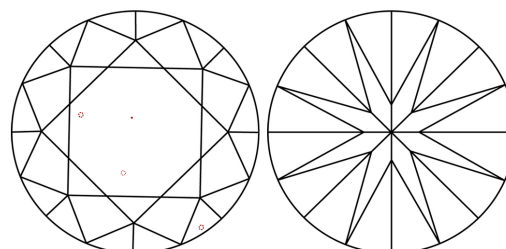
Comments: This Laboratory Grown Diamond was created by Chemical Vapor Deposition (CVD) growth process. Type IIa

PROPORTIONS



Sample Image Used

CLARITY CHARACTERISTICS



KEY TO SYMBOLS

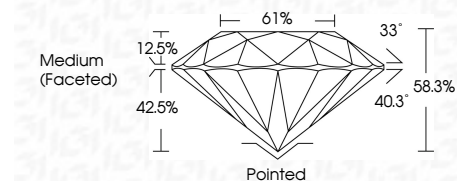
Red symbols indicate internal characteristics. Green symbols indicate external characteristics.

COLOR

D E F G H I J Faint Very Light Light

CLARITY

Table with 5 columns: IF, VS 1-2, VS 1-2, SI 1-2, I 1-3. Internally Flawless, Very Very Slightly Included, Very Slightly Included, Slightly Included, Included



ADDITIONAL GRADING INFORMATION

Polish EXCELLENT

Symmetry EXCELLENT

Fluorescence NONE

Inscription(s) IGI LG652493691

Comments: This Laboratory Grown Diamond was created by Chemical Vapor Deposition (CVD) growth process. Type IIa



Summary table of report details: September 19, 2024, IGI Report No LG652493691, ROUND BRILLIANT, 8.22 - 8.28 X 4.81 MM, 2.01 CARATS, F, VS 1, EXCELLENT, 58.3%, 61%, Medium (Faceted), Pointed, EXCELLENT, EXCELLENT, NONE, IGI LG652493691

Comments: This Laboratory Grown Diamond was created by Chemical Vapor Deposition (CVD) growth process. Type IIa