



ELECTRONIC COPY

LABORATORY GROWN DIAMOND REPORT

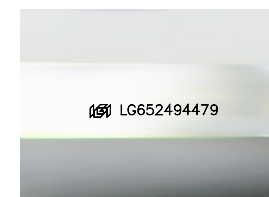
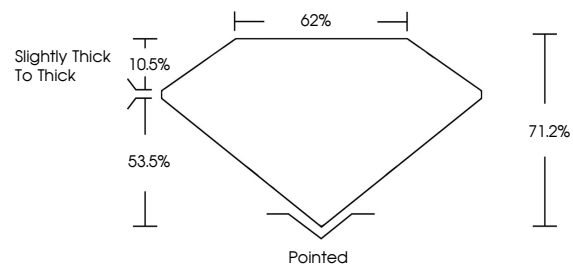
September 21, 2024
 IGI Report Number **LG652494479**
 Description **LABORATORY GROWN DIAMOND**
 Shape and Cutting Style **PRINCESS CUT**
 Measurements **5.48 X 5.45 X 3.88 MM**
GRADING RESULTS
 Carat Weight **1.04 CARAT**
 Color Grade **E**
 Clarity Grade **VS 1**

ADDITIONAL GRADING INFORMATION

Polish **EXCELLENT**
 Symmetry **VERY GOOD**
 Fluorescence **NONE**
 Inscription(s) **IGI LG652494479**

Comments: This Laboratory Grown Diamond was created by Chemical Vapor Deposition (CVD) growth process. Type IIa

PROPORTIONS



Sample Image Used

COLOR

D E F G H I J Faint Very Light Light

CLARITY

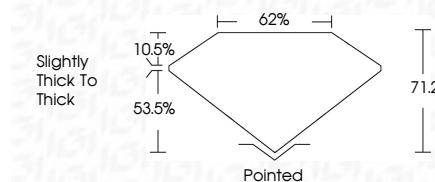
IF	VS ¹⁻²	VS ¹⁻²	SI ¹⁻²	I ¹⁻³
Internally Flawless	Very Very Slightly Included	Very Slightly Included	Slightly Included	Included



September 21, 2024
 IGI Report Number **LG652494479**
 Description **LABORATORY GROWN DIAMOND**
 Shape and Cutting Style **PRINCESS CUT**
 Measurements **5.48 X 5.45 X 3.88 MM**
GRADING RESULTS
 Carat Weight **1.04 CARAT**
 Color Grade **E**
 Clarity Grade **VS 1**

ADDITIONAL GRADING INFORMATION

Polish **EXCELLENT**
 Symmetry **VERY GOOD**
 Fluorescence **NONE**
 Inscription(s) **IGI LG652494479**
 Comments: This Laboratory Grown Diamond was created by Chemical Vapor Deposition (CVD) growth process. Type IIa



IGI



September 21, 2024
 IGI Report No **LG652494479**
PRINCESS CUT
1.04 CARAT
 Carat Weight **E**
 Color Grade **VS 1**
 Clarity Grade **71.2%**
 Depth **62%**
 Table **Slightly Thick To Thick**
 Girdle **Pointed**
 Culet **EXCELLENT**
 Polish **VERY GOOD**
 Symmetry **NONE**
 Fluorescence **NONE**
 Inscription(s) **IGI LG652494479**
 Comments: This Laboratory Grown Diamond was created by Chemical Vapor Deposition (CVD) growth process. Type IIa