



ELECTRONIC COPY

LABORATORY GROWN DIAMOND REPORT

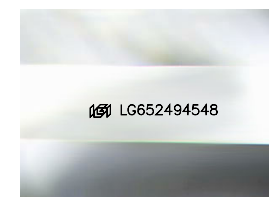
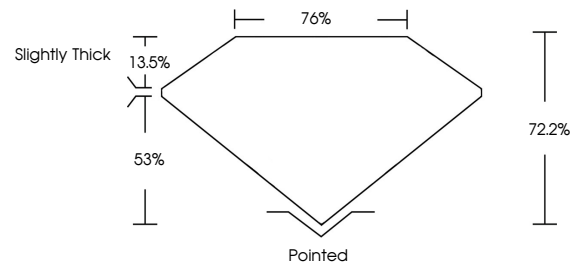
September 20, 2024
 IGI Report Number **LG652494548**
 Description **LABORATORY GROWN DIAMOND**
 Shape and Cutting Style **PRINCESS CUT**
 Measurements **5.45 X 5.28 X 3.81 MM**
GRADING RESULTS
 Carat Weight **1.01 CARAT**
 Color Grade **E**
 Clarity Grade **VS 2**

ADDITIONAL GRADING INFORMATION

Polish **VERY GOOD**
 Symmetry **VERY GOOD**
 Fluorescence **NONE**
 Inscription(s) **IGI LG652494548**

Comments: This Laboratory Grown Diamond was created by Chemical Vapor Deposition (CVD) growth process. Type IIa

PROPORTIONS



Sample Image Used

COLOR

D E F G H I J Faint Very Light Light

CLARITY

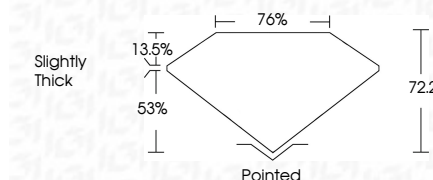
IF	VS ¹⁻²	VS ¹⁻²	SI ¹⁻²	I ¹⁻³
Internally Flawless	Very Very Slightly Included	Very Slightly Included	Slightly Included	Included



September 20, 2024
 IGI Report Number **LG652494548**
 Description **LABORATORY GROWN DIAMOND**
 Shape and Cutting Style **PRINCESS CUT**
 Measurements **5.45 X 5.28 X 3.81 MM**
GRADING RESULTS
 Carat Weight **1.01 CARAT**
 Color Grade **E**
 Clarity Grade **VS 2**

ADDITIONAL GRADING INFORMATION

Polish **VERY GOOD**
 Symmetry **VERY GOOD**
 Fluorescence **NONE**
 Inscription(s) **IGI LG652494548**
 Comments: This Laboratory Grown Diamond was created by Chemical Vapor Deposition (CVD) growth process. Type IIa



IGI

September 20, 2024
 IGI Report No. LG652494548
PRINCESS CUT
 5.45 X 5.28 X 3.81 MM
 Carat Weight 1.01 CARAT
 Color Grade E
 Clarity Grade VS 2
 Depth 72.2%
 Table 76%
 Girdle Slightly Thick
 Culet Pointed
 Polish VERY GOOD
 Symmetry VERY GOOD
 Fluorescence NONE
 Inscription(s) IGI LG652494548

Comments: This Laboratory Grown Diamond was created by Chemical Vapor Deposition (CVD) growth process. Type IIa