



ELECTRONIC COPY

LABORATORY GROWN DIAMOND REPORT

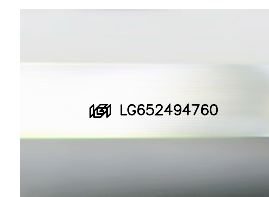
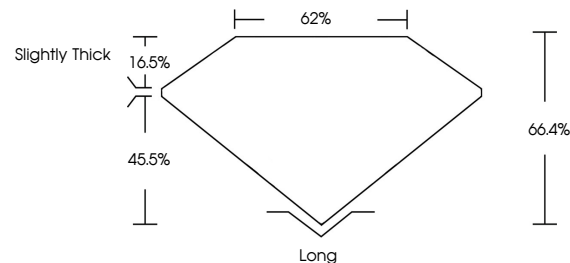
September 20, 2024  
IGI Report Number LG652494760  
Description LABORATORY GROWN DIAMOND  
Shape and Cutting Style EMERALD CUT  
Measurements 6.92 X 4.67 X 3.10 MM  
**GRADING RESULTS**  
Carat Weight 1.02 CARAT  
Color Grade E  
Clarity Grade VVS 2

ADDITIONAL GRADING INFORMATION

Polish VERY GOOD  
Symmetry VERY GOOD  
Fluorescence NONE  
Inscription(s) IGI LG652494760

Comments: This Laboratory Grown Diamond was created by Chemical Vapor Deposition (CVD) growth process.  
Type IIa

PROPORTIONS



Sample Image Used

COLOR

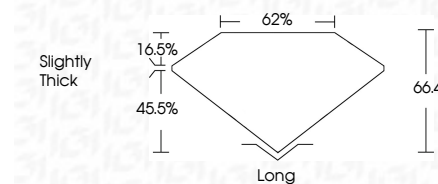
D E F G H I J Faint Very Light Light

CLARITY

IF WS 1-2 VS 1-2 SI 1-2 I 1-3  
Internally Flawless Very Very Slightly Included Very Slightly Included Slightly Included Included



September 20, 2024  
IGI Report Number LG652494760  
Description LABORATORY GROWN DIAMOND  
Shape and Cutting Style EMERALD CUT  
Measurements 6.92 X 4.67 X 3.10 MM  
**GRADING RESULTS**  
Carat Weight 1.02 CARAT  
Color Grade E  
Clarity Grade VVS 2



ADDITIONAL GRADING INFORMATION

Polish VERY GOOD  
Symmetry VERY GOOD  
Fluorescence NONE  
Inscription(s) IGI LG652494760  
Comments: This Laboratory Grown Diamond was created by Chemical Vapor Deposition (CVD) growth process.  
Type IIa



September 20, 2024  
IGI Report No LG652494760  
EMERALD CUT  
6.92 X 4.67 X 3.10 MM  
1.02 CARAT  
Color Grade E  
Clarity Grade VVS 2  
Depth 66.4%  
Table 62%  
Girdle Slightly Thick  
Culet Long  
Polish VERY GOOD  
Symmetry VERY GOOD  
Fluorescence NONE  
Inscription(s) IGI LG652494760  
Comments: This Laboratory Grown Diamond was created by Chemical Vapor Deposition (CVD) growth process.  
Type IIa