



ELECTRONIC COPY

LG652494890
Report verification at igi.org



September 20, 2024

IGI Report Number **LG652494890**

Description **LABORATORY GROWN DIAMOND**

Shape and Cutting Style **PRINCESS CUT**

Measurements **5.33 X 5.27 X 4.02 MM**

GRADING RESULTS

Carat Weight **1.02 CARAT**

Color Grade **F**

Clarity Grade **VS 1**

September 20, 2024

IGI Report Number **LG652494890**

Description **LABORATORY GROWN DIAMOND**

Shape and Cutting Style **PRINCESS CUT**

Measurements **5.33 X 5.27 X 4.02 MM**

GRADING RESULTS

Carat Weight **1.02 CARAT**

Color Grade **F**

Clarity Grade **VS 1**

ADDITIONAL GRADING INFORMATION

Polish **VERY GOOD**

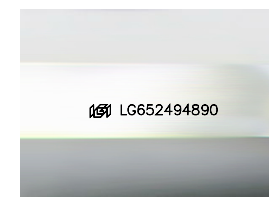
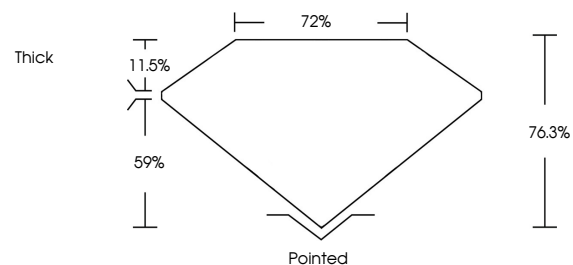
Symmetry **VERY GOOD**

Fluorescence **NONE**

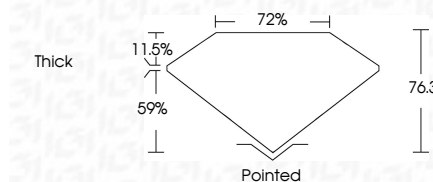
Inscription(s) **IGI LG652494890**

Comments: This Laboratory Grown Diamond was created by Chemical Vapor Deposition (CVD) growth process.
Type IIa

PROPORTIONS



Sample Image Used



ADDITIONAL GRADING INFORMATION

Polish **VERY GOOD**

Symmetry **VERY GOOD**

Fluorescence **NONE**

Inscription(s) **IGI LG652494890**

Comments: This Laboratory Grown Diamond was created by Chemical Vapor Deposition (CVD) growth process.
Type IIa

COLOR

D E F G H I J Faint Very Light Light

CLARITY

IF	VS ¹⁻²	VS ¹⁻²	SI ¹⁻²	I ¹⁻³
Internally Flawless	Very Very Slightly Included	Very Slightly Included	Slightly Included	Included



IGI



September 20, 2024
IGI Report No. LG652494890
PRINCESS CUT

1.02 CARAT
F

5.33 X 5.27 X 4.02 MM

Carat Weight
Color Grade
Clarity Grade
Table
Depth
Girdle
Thick

VS 1
76.3%
72%

Pointed
Polish
Symmetry
Fluorescence
Inscription(s)

VERY GOOD
VERY GOOD
NONE
IGI LG652494890

Comments: This Laboratory Grown Diamond was created by Chemical Vapor Deposition (CVD) growth process.
Type IIa