



**ELECTRONIC COPY**

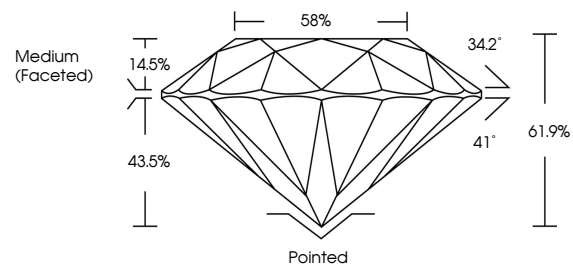
LG652496195  
Report verification at [igi.org](http://igi.org)



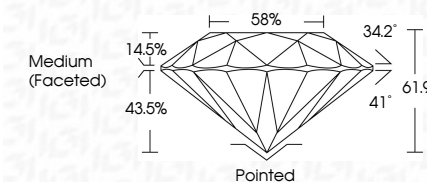
September 21, 2024  
IGI Report Number **LG652496195**  
Description **LABORATORY GROWN DIAMOND**  
Shape and Cutting Style **ROUND BRILLIANT**  
Measurements **9.28 - 9.32 X 5.76 MM**  
**GRADING RESULTS**  
Carat Weight **3.08 CARATS**  
Color Grade **G**  
Clarity Grade **SI 2**  
Cut Grade **IDEAL**

September 21, 2024  
IGI Report Number **LG652496195**  
Description **LABORATORY GROWN DIAMOND**  
Shape and Cutting Style **ROUND BRILLIANT**  
Measurements **9.28 - 9.32 X 5.76 MM**  
**GRADING RESULTS**  
Carat Weight **3.08 CARATS**  
Color Grade **G**  
Clarity Grade **SI 2**  
Cut Grade **IDEAL**

**PROPORTIONS**



Sample Image Used



**ADDITIONAL GRADING INFORMATION**  
Polish **EXCELLENT**  
Symmetry **EXCELLENT**  
Fluorescence **NONE**  
Inscription(s) **IGI LG652496195**

Comments: This Laboratory Grown Diamond was created by Chemical Vapor Deposition (CVD) growth process. Type IIa

**ADDITIONAL GRADING INFORMATION**  
Polish **EXCELLENT**  
Symmetry **EXCELLENT**  
Fluorescence **NONE**  
Inscription(s) **IGI LG652496195**  
Comments: This Laboratory Grown Diamond was created by Chemical Vapor Deposition (CVD) growth process. Type IIa

**COLOR**

D E F G H I J Faint Very Light Light

**CLARITY**

IF	VS <sup>1-2</sup>	VS <sup>1-2</sup>	SI <sup>1-2</sup>	I <sup>1-3</sup>
Internally Flawless	Very Very Slightly Included	Very Slightly Included	Slightly Included	Included



**IGI**

September 21, 2024  
IGI Report No **LG652496195**  
**ROUND BRILLIANT**  
**9.28 - 9.32 X 5.76 MM**  
Carat Weight **3.08 CARATS**  
Color Grade **G**  
Clarity Grade **SI 2**  
Cut Grade **IDEAL**  
Depth **61.9%**  
Table **14.5%**  
Girdle **88%**  
Medium (Faceted)  
Culet **Pointed**  
Polish **EXCELLENT**  
Symmetry **EXCELLENT**  
Fluorescence **NONE**  
Inscriptions(s) **IGI LG652496195**  
Comments: This Laboratory Grown Diamond was created by Chemical Vapor Deposition (CVD) growth process. Type IIa