



ELECTRONIC COPY

LG652498543
Report verification at igi.org



September 30, 2024

IGI Report Number **LG652498543**

Description **LABORATORY GROWN DIAMOND**

Shape and Cutting Style **CUT CORNERED
RECTANGULAR MODIFIED
BRILLIANT**

Measurements **8.66 X 6.17 X 4.12 MM**

GRADING RESULTS

Carat Weight **2.01 CARATS**

Color Grade **FANCY DEEP BROWN PINK**

Clarity Grade **VS 1**

September 30, 2024
IGI Report Number **LG652498543**
Description **LABORATORY GROWN DIAMOND**
Shape and Cutting Style **CUT CORNERED RECTANGULAR
MODIFIED BRILLIANT**
Measurements **8.66 X 6.17 X 4.12 MM**

GRADING RESULTS

Carat Weight **2.01 CARATS**

Color Grade **FANCY DEEP BROWN PINK**

Clarity Grade **VS 1**

ADDITIONAL GRADING INFORMATION

Polish **EXCELLENT**

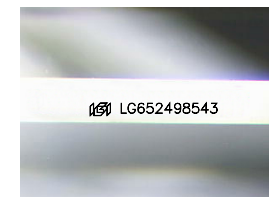
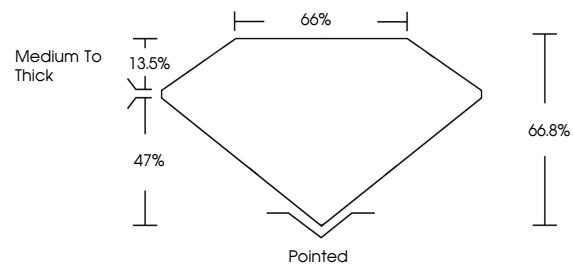
Symmetry **EXCELLENT**

Fluorescence **SLIGHT**

Inscription(s) **IGI LG652498543**

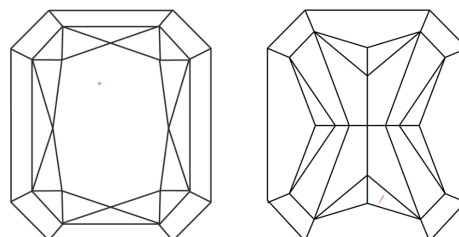
Comments: This Laboratory Grown Diamond was created by Chemical Vapor Deposition (CVD) growth process. Indications of post-growth treatment.

PROPORTIONS



Sample Image Used

CLARITY CHARACTERISTICS



KEY TO SYMBOLS

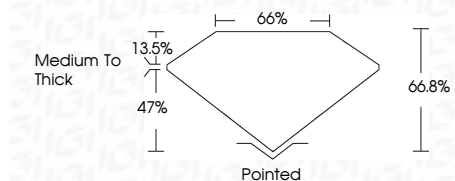
Red symbols indicate internal characteristics.
Green symbols indicate external characteristics.

COLOR

D E F G H I J Faint Very Light Light

CLARITY

IF	VS ¹⁻²	VS ¹⁻²	SI ¹⁻²	I ¹⁻³
Internally Flawless	Very Very Slightly Included	Very Slightly Included	Slightly Included	Included



ADDITIONAL GRADING INFORMATION

Polish **EXCELLENT**

Symmetry **EXCELLENT**

Fluorescence **SLIGHT**

Inscription(s) **IGI LG652498543**

Comments: This Laboratory Grown Diamond was created by Chemical Vapor Deposition (CVD) growth process. Indications of post-growth treatment.



IGI



September 30, 2024
IGI Report No LG652498543
CUT CORNERED RECT. MODIFIED BRILLIANT
8.66 X 6.17 X 4.12 MM
2.01 CARATS
FANCY DEEP BROWN PINK
VS 1
66.8%
65%
Medium to Thick
Pointed
EXCELLENT
EXCELLENT
SLIGHT
IGI LG652498543
Comments: This Laboratory Grown Diamond was created by Chemical Vapor Deposition (CVD) growth process. Indications of post-growth treatment.