



ELECTRONIC COPY

LG652499930
Report verification at igi.org



September 20, 2024

IGI Report Number **LG652499930**

Description **LABORATORY GROWN DIAMOND**

Shape and Cutting Style **EMERALD CUT**

Measurements **9.82 X 6.92 X 4.53 MM**

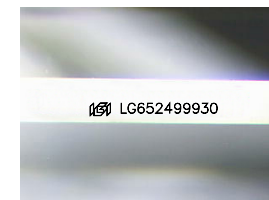
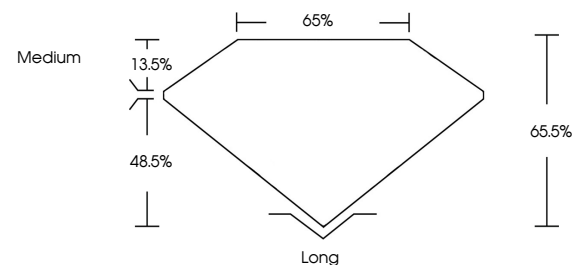
GRADING RESULTS

Carat Weight **3.05 CARATS**

Color Grade **E**

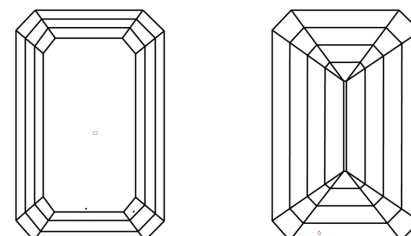
Clarity Grade **VVS 2**

PROPORTIONS



Sample Image Used

CLARITY CHARACTERISTICS



KEY TO SYMBOLS

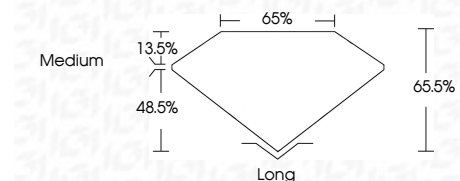
Red symbols indicate internal characteristics.
Green symbols indicate external characteristics.

COLOR

D E F G H I J Faint Very Light Light

CLARITY

IF	VS ¹⁻²	VS ¹⁻²	SI ¹⁻²	I ¹⁻³
Internally Flawless	Very Very Slightly Included	Very Slightly Included	Slightly Included	Included



ADDITIONAL GRADING INFORMATION

Polish **EXCELLENT**

Symmetry **EXCELLENT**

Fluorescence **NONE**

Inscription(s) **IGI LG652499930**

Comments: This Laboratory Grown Diamond was created by Chemical Vapor Deposition (CVD) growth process.
Type IIa



IGI

September 20, 2024
IGI Report No. LG652499930
EMERALD CUT
9.82 X 6.92 X 4.53 MM
3.05 CARATS
E
VVS 2
65.5%
65%
Medium
Long
EXCELLENT
EXCELLENT
NONE
IGI LG652499930

Comments: This Laboratory Grown Diamond was created by Chemical Vapor Deposition (CVD) growth process.
Type IIa

