



ELECTRONIC COPY

LG653410581
Report verification at igi.org



October 21, 2024

IGI Report Number **LG653410581**

Description **LABORATORY GROWN DIAMOND**

Shape and Cutting Style **ROUND BRILLIANT**

Measurements **8.31 - 8.37 X 5.05 MM**

GRADING RESULTS

Carat Weight **2.18 CARATS**

Color Grade **I**

Clarity Grade **VVS 2**

Cut Grade **EXCELLENT**

October 21, 2024

IGI Report Number **LG653410581**

Description **LABORATORY GROWN DIAMOND**

Shape and Cutting Style **ROUND BRILLIANT**

Measurements **8.31 - 8.37 X 5.05 MM**

GRADING RESULTS

Carat Weight **2.18 CARATS**

Color Grade **I**

Clarity Grade **VVS 2**

Cut Grade **EXCELLENT**

ADDITIONAL GRADING INFORMATION

Polish **EXCELLENT**

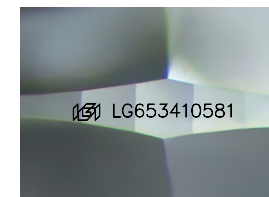
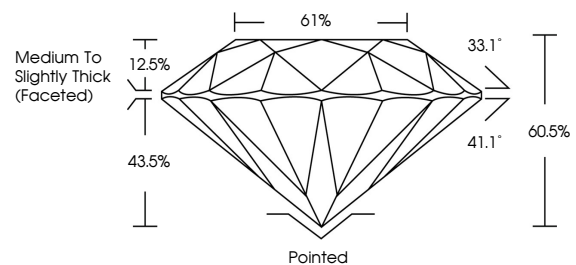
Symmetry **EXCELLENT**

Fluorescence **NONE**

Inscription(s) **LG653410581**

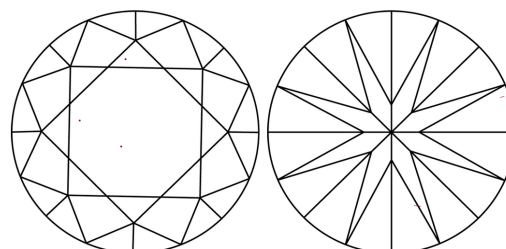
Comments: This Laboratory Grown Diamond was created by Chemical Vapor Deposition (CVD) growth process. Type IIa

PROPORTIONS



Sample Image Used

CLARITY CHARACTERISTICS



KEY TO SYMBOLS

Red symbols indicate internal characteristics.
Green symbols indicate external characteristics.

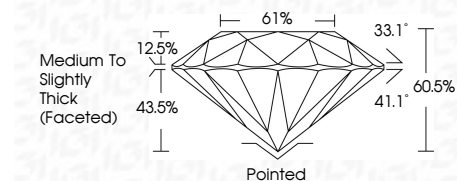
COLOR

D E F G H I J Faint Very Light Light

CLARITY

IF WS¹⁻² VS¹⁻² SI¹⁻² I¹⁻³

Internally Flawless Very Very Slightly Included Very Slightly Included Slightly Included Included



ADDITIONAL GRADING INFORMATION

Polish **EXCELLENT**

Symmetry **EXCELLENT**

Fluorescence **NONE**

Inscription(s) **LG653410581**

Comments: This Laboratory Grown Diamond was created by Chemical Vapor Deposition (CVD) growth process. Type IIa



October 21, 2024	IGI Report No LG653410581	ROUND BRILLIANT	2.18 CARATS	I	VVS 2	EXCELLENT	EXCELLENT	EXCELLENT	NONE	LG653410581	
8.31 - 8.37 X 5.05 MM	Carat Weight	Color Grade	Clarity Grade	Depth	Table	Girdle	Culet	Polish	Symmetry	Fluorescence	Inscription(s)
61%	Medium To Slightly Thick (Faceted)	Pointed	EXCELLENT	EXCELLENT	NONE	EXCELLENT	EXCELLENT	EXCELLENT	NONE	LG653410581	

Comments: This Laboratory Grown Diamond was created by Chemical Vapor Deposition (CVD) growth process. Type IIa