



ELECTRONIC COPY

LG653411511
Report verification at igi.org



October 1, 2024
IGI Report Number: LG653411511
Description: LABORATORY GROWN DIAMOND
Shape and Cutting Style: ROUND BRILLIANT
Measurements: 10.16 - 10.29 X 6.30 MM
GRADING RESULTS
Carat Weight: 4.01 CARATS
Color Grade: G
Clarity Grade: VS 1
Cut Grade: VERY GOOD

LABORATORY GROWN DIAMOND REPORT

October 1, 2024
IGI Report Number: LG653411511
Description: LABORATORY GROWN DIAMOND
Shape and Cutting Style: ROUND BRILLIANT
Measurements: 10.16 - 10.29 X 6.30 MM

GRADING RESULTS

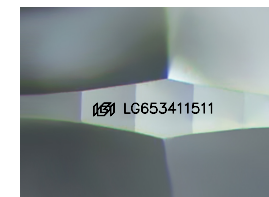
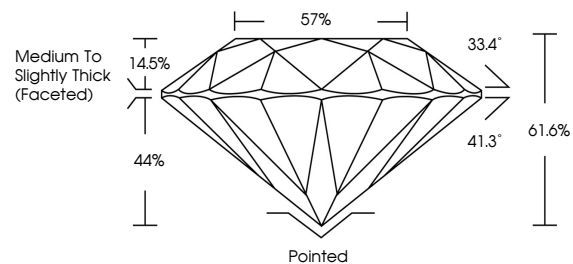
Carat Weight: 4.01 CARATS
Color Grade: G
Clarity Grade: VS 1
Cut Grade: VERY GOOD

ADDITIONAL GRADING INFORMATION

Polish: VERY GOOD
Symmetry: GOOD
Fluorescence: NONE
Inscription(s): IGI LG653411511

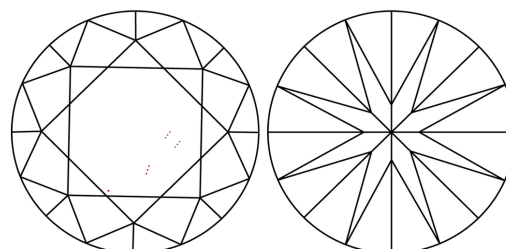
Comments: This Laboratory Grown Diamond was created by Chemical Vapor Deposition (CVD) growth process. Type IIa

PROPORTIONS



Sample Image Used

CLARITY CHARACTERISTICS



KEY TO SYMBOLS

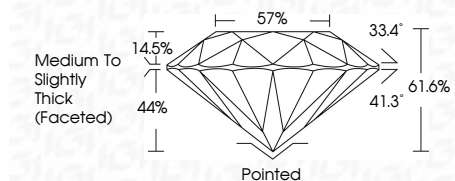
Red symbols indicate internal characteristics.
Green symbols indicate external characteristics.

COLOR

D E F G H I J Faint Very Light Light

CLARITY

Table with columns for clarity grades: IF, VS 1-2, VS 1-2, SI 1-2, I 1-3 and their descriptions: Internally Flawless, Very Very Slightly Included, Very Slightly Included, Slightly Included, Included



ADDITIONAL GRADING INFORMATION

Polish: VERY GOOD
Symmetry: GOOD
Fluorescence: NONE
Inscription(s): IGI LG653411511
Comments: This Laboratory Grown Diamond was created by Chemical Vapor Deposition (CVD) growth process. Type IIa



Summary of report details including date, report number, description, measurements, grading results, and additional information.

Comments: This Laboratory Grown Diamond was created by Chemical Vapor Deposition (CVD) growth process. Type IIa