



ELECTRONIC COPY

LG653411515
Report verification at igi.org



October 1, 2024
IGI Report Number LG653411515
Description LABORATORY GROWN DIAMOND
Shape and Cutting Style ROUND BRILLIANT
Measurements 10.35 - 10.42 X 6.11 MM
GRADING RESULTS
Carat Weight 4.02 CARATS
Color Grade E
Clarity Grade VVS 2
Cut Grade VERY GOOD

October 1, 2024
IGI Report Number LG653411515
Description LABORATORY GROWN DIAMOND
Shape and Cutting Style ROUND BRILLIANT
Measurements 10.35 - 10.42 X 6.11 MM

GRADING RESULTS

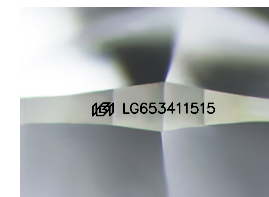
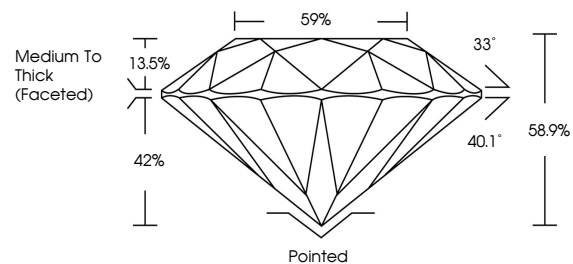
Carat Weight 4.02 CARATS
Color Grade E
Clarity Grade VVS 2
Cut Grade VERY GOOD

ADDITIONAL GRADING INFORMATION

Polish GOOD
Symmetry VERY GOOD
Fluorescence NONE
Inscription(s) IGI LG653411515

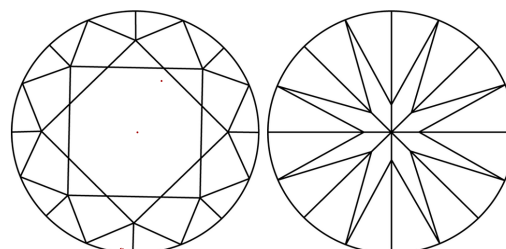
Comments: This Laboratory Grown Diamond was created by Chemical Vapor Deposition (CVD) growth process. Type IIa

PROPORTIONS



Sample Image Used

CLARITY CHARACTERISTICS



KEY TO SYMBOLS

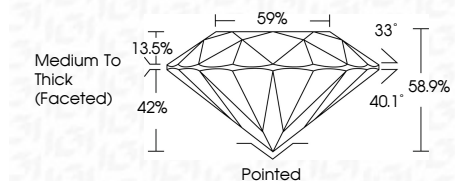
Red symbols indicate internal characteristics.
Green symbols indicate external characteristics.

COLOR

D E F G H I J Faint Very Light Light

CLARITY

IF VVS 1-2 VS 1-2 SI 1-2 I 1-3
Internally Flawless Very Very Slightly Included Very Slightly Included Slightly Included Included



ADDITIONAL GRADING INFORMATION

Polish GOOD
Symmetry VERY GOOD
Fluorescence NONE
Inscription(s) IGI LG653411515
Comments: This Laboratory Grown Diamond was created by Chemical Vapor Deposition (CVD) growth process. Type IIa



Summary information including date, report number, measurements, grading results, and additional information in a compact layout.