



ELECTRONIC COPY

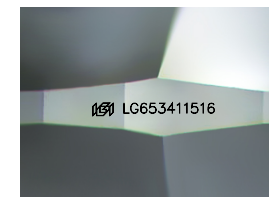
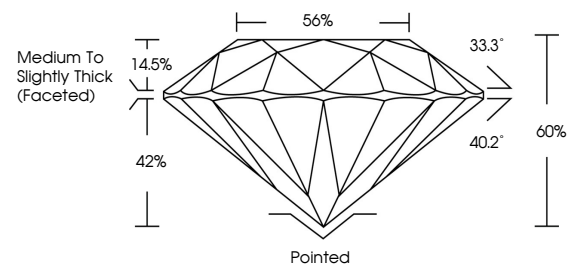
LG653411516
Report verification at igi.org



October 1, 2024
IGI Report Number: LG653411516
Description: LABORATORY GROWN DIAMOND
Shape and Cutting Style: ROUND BRILLIANT
Measurements: 10.30 - 10.36 X 6.19 MM
GRADING RESULTS
Carat Weight: 4.02 CARATS
Color Grade: F
Clarity Grade: VS 1
Cut Grade: VERY GOOD

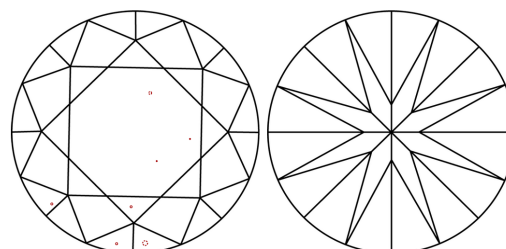
October 1, 2024
IGI Report Number: LG653411516
Description: LABORATORY GROWN DIAMOND
Shape and Cutting Style: ROUND BRILLIANT
Measurements: 10.30 - 10.36 X 6.19 MM

PROPORTIONS



Sample Image Used

CLARITY CHARACTERISTICS



KEY TO SYMBOLS

Red symbols indicate internal characteristics.
Green symbols indicate external characteristics.

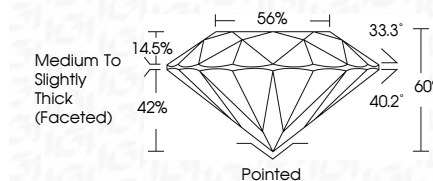
GRADING RESULTS

Carat Weight: 4.02 CARATS
Color Grade: F
Clarity Grade: VS 1
Cut Grade: VERY GOOD

ADDITIONAL GRADING INFORMATION

Polish: VERY GOOD
Symmetry: GOOD
Fluorescence: NONE
Inscription(s): IGI LG653411516

Comments: This Laboratory Grown Diamond was created by Chemical Vapor Deposition (CVD) growth process. Type IIa



ADDITIONAL GRADING INFORMATION

Polish: VERY GOOD
Symmetry: GOOD
Fluorescence: NONE
Inscription(s): IGI LG653411516
Comments: This Laboratory Grown Diamond was created by Chemical Vapor Deposition (CVD) growth process. Type IIa

COLOR

D E F G H I J Faint Very Light Light

CLARITY

IF VS 1-2 VS 1-2 SI 1-2 I 1-3
Internally Flawless Very Very Slightly Included Very Slightly Included Slightly Included Included



IGI



Vertical text block containing report details: October 1, 2024, IGI Report No LG653411516, ROUND BRILLIANT, 10.30 - 10.36 X 6.19 MM, 4.02 CARATS, F, VS 1, VERY GOOD, 60%, 56%, Medium To Slightly Thick (Faceted), Pointed, VERY GOOD, GOOD, NONE, IGI LG653411516. Includes comment: This Laboratory Grown Diamond was created by Chemical Vapor Deposition (CVD) growth process. Type IIa.