



**ELECTRONIC COPY**

LG653411542  
Report verification at igi.org



September 30, 2024  
IGI Report Number **LG653411542**  
Description **LABORATORY GROWN DIAMOND**  
Shape and Cutting Style **ROUND BRILLIANT**  
Measurements **10.81 - 10.90 X 6.68 MM**  
**GRADING RESULTS**  
Carat Weight **4.95 CARATS**  
Color Grade **F**  
Clarity Grade **VS 2**  
Cut Grade **VERY GOOD**

September 30, 2024  
IGI Report Number **LG653411542**  
Description **LABORATORY GROWN DIAMOND**  
Shape and Cutting Style **ROUND BRILLIANT**  
Measurements **10.81 - 10.90 X 6.68 MM**

**GRADING RESULTS**

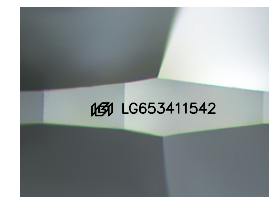
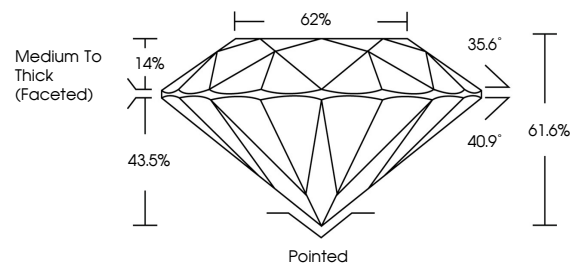
Carat Weight **4.95 CARATS**  
Color Grade **F**  
Clarity Grade **VS 2**  
Cut Grade **VERY GOOD**

**ADDITIONAL GRADING INFORMATION**

Polish **VERY GOOD**  
Symmetry **GOOD**  
Fluorescence **NONE**  
Inscription(s) **IGI LG653411542**

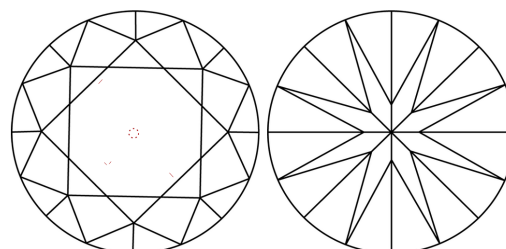
Comments: This Laboratory Grown Diamond was created by Chemical Vapor Deposition (CVD) growth process.  
Type IIa

**PROPORTIONS**



Sample Image Used

**CLARITY CHARACTERISTICS**



**KEY TO SYMBOLS**

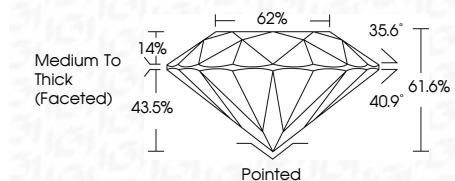
Red symbols indicate internal characteristics.  
Green symbols indicate external characteristics.

**COLOR**

D E F G H I J Faint Very Light Light

**CLARITY**

IF	VS <sup>1-2</sup>	VS <sup>1-2</sup>	SI <sup>1-2</sup>	I <sup>1-3</sup>
Internally Flawless	Very Very Slightly Included	Very Slightly Included	Slightly Included	Included



**ADDITIONAL GRADING INFORMATION**

Polish **VERY GOOD**  
Symmetry **GOOD**  
Fluorescence **NONE**  
Inscription(s) **IGI LG653411542**  
Comments: This Laboratory Grown Diamond was created by Chemical Vapor Deposition (CVD) growth process.  
Type IIa



**IGI**



September 30, 2024  
IGI Report No LG653411542  
**ROUND BRILLIANT**  
10.81 - 10.90 X 6.68 MM  
4.95 CARATS  
Color Grade **F**  
Clarity Grade **VS 2**  
Depth **61.6%**  
Table **62%**  
Girdle **Medium To Thick (Faceted)**  
Culet **Pointed**  
Polish **VERY GOOD**  
Symmetry **GOOD**  
Fluorescence **NONE**  
Inscriptions(s) **IGI LG653411542**  
Comments: This Laboratory Grown Diamond was created by Chemical Vapor Deposition (CVD) growth process.  
Type IIa