



ELECTRONIC COPY

LG653411545
Report verification at igi.org



September 30, 2024
IGI Report Number: LG653411545
Description: LABORATORY GROWN DIAMOND
Shape and Cutting Style: ROUND BRILLIANT
Measurements: 11.14 - 11.20 X 6.53 MM
GRADING RESULTS
Carat Weight: 4.98 CARATS
Color Grade: G
Clarity Grade: VS 1
Cut Grade: EXCELLENT

LABORATORY GROWN DIAMOND REPORT

September 30, 2024
IGI Report Number: LG653411545
Description: LABORATORY GROWN DIAMOND
Shape and Cutting Style: ROUND BRILLIANT
Measurements: 11.14 - 11.20 X 6.53 MM

GRADING RESULTS

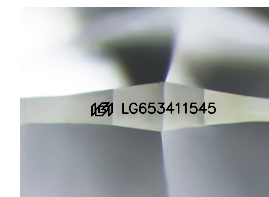
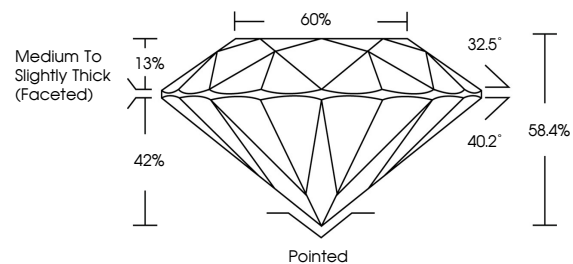
Carat Weight: 4.98 CARATS
Color Grade: G
Clarity Grade: VS 1
Cut Grade: EXCELLENT

ADDITIONAL GRADING INFORMATION

Polish: VERY GOOD
Symmetry: VERY GOOD
Fluorescence: NONE
Inscription(s): IGI LG653411545

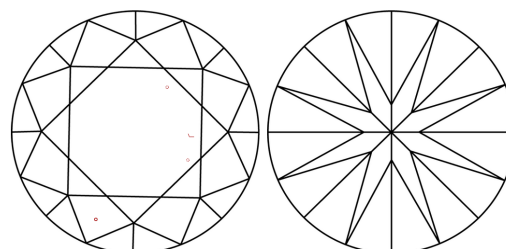
Comments: This Laboratory Grown Diamond was created by Chemical Vapor Deposition (CVD) growth process. Type IIa

PROPORTIONS



Sample Image Used

CLARITY CHARACTERISTICS



KEY TO SYMBOLS

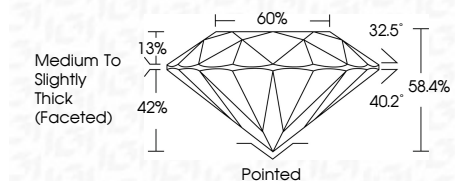
Red symbols indicate internal characteristics.
Green symbols indicate external characteristics.

COLOR

D E F G H I J Faint Very Light Light

CLARITY

IF VS 1-2 VS 1-2 SI 1-2 I 1-3
Internally Flawless Very Very Slightly Included Very Slightly Included Slightly Included Included



ADDITIONAL GRADING INFORMATION

Polish: VERY GOOD
Symmetry: VERY GOOD
Fluorescence: NONE
Inscription(s): IGI LG653411545
Comments: This Laboratory Grown Diamond was created by Chemical Vapor Deposition (CVD) growth process. Type IIa



IGI



Summary of report details including date, report number, measurements, grading results, and additional information.

Comments: This Laboratory Grown Diamond was created by Chemical Vapor Deposition (CVD) growth process. Type IIa