



ELECTRONIC COPY

LG653411556
Report verification at igi.org



September 30, 2024
IGI Report Number **LG653411556**
Description **LABORATORY GROWN DIAMOND**
Shape and Cutting Style **ROUND BRILLIANT**
Measurements **10.89 - 11.07 X 6.73 MM**
GRADING RESULTS
Carat Weight **5.00 CARATS**
Color Grade **H**
Clarity Grade **VS 2**
Cut Grade **VERY GOOD**

September 30, 2024
IGI Report Number **LG653411556**
Description **LABORATORY GROWN DIAMOND**
Shape and Cutting Style **ROUND BRILLIANT**
Measurements **10.89 - 11.07 X 6.73 MM**

GRADING RESULTS

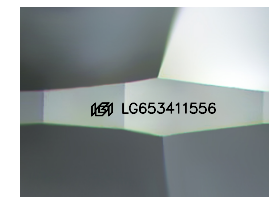
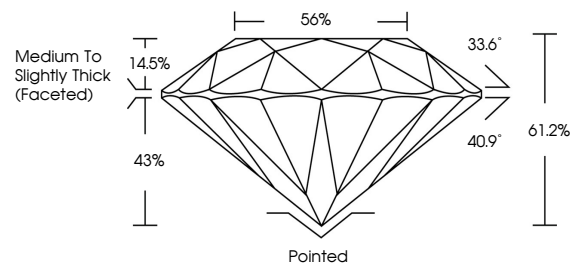
Carat Weight **5.00 CARATS**
Color Grade **H**
Clarity Grade **VS 2**
Cut Grade **VERY GOOD**

ADDITIONAL GRADING INFORMATION

Polish **VERY GOOD**
Symmetry **GOOD**
Fluorescence **NONE**
Inscription(s) **IGI LG653411556**

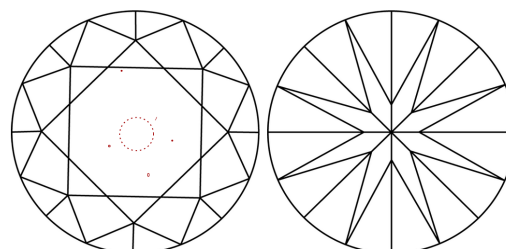
Comments: This Laboratory Grown Diamond was created by Chemical Vapor Deposition (CVD) growth process.
Type IIa

PROPORTIONS



Sample Image Used

CLARITY CHARACTERISTICS



KEY TO SYMBOLS

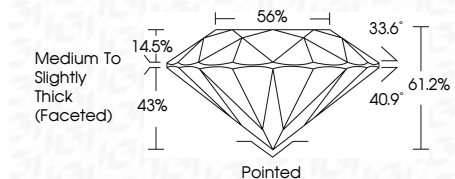
Red symbols indicate internal characteristics.
Green symbols indicate external characteristics.

COLOR

D E F G H I J Faint Very Light Light

CLARITY

IF	VS ¹⁻²	VS ¹⁻²	SI ¹⁻²	I ¹⁻³
Internally Flawless	Very Very Slightly Included	Very Slightly Included	Slightly Included	Included



ADDITIONAL GRADING INFORMATION

Polish **VERY GOOD**
Symmetry **GOOD**
Fluorescence **NONE**
Inscription(s) **IGI LG653411556**
Comments: This Laboratory Grown Diamond was created by Chemical Vapor Deposition (CVD) growth process.
Type IIa



September 30, 2024
IGI Report No LG653411556
ROUND BRILLIANT
10.89 - 11.07 X 6.73 MM
5.00 CARATS
H
VS 2
VERY GOOD
61.2%
56%
Medium To Slightly Thick (Faceted)
Pointed
VERY GOOD
GOOD
NONE
IGI LG653411556
Inscriptions(s)
Comments: This Laboratory Grown Diamond was created by Chemical Vapor Deposition (CVD) growth process.
Type IIa