



**ELECTRONIC COPY**

LG653411558  
Report verification at igi.org



September 30, 2024  
IGI Report Number **LG653411558**  
Description **LABORATORY GROWN DIAMOND**  
Shape and Cutting Style **ROUND BRILLIANT**  
Measurements **11.11 - 11.30 X 6.36 MM**  
**GRADING RESULTS**  
Carat Weight **4.99 CARATS**  
Color Grade **G**  
Clarity Grade **VS 2**  
Cut Grade **VERY GOOD**

September 30, 2024  
IGI Report Number **LG653411558**  
Description **LABORATORY GROWN DIAMOND**  
Shape and Cutting Style **ROUND BRILLIANT**  
Measurements **11.11 - 11.30 X 6.36 MM**

**GRADING RESULTS**

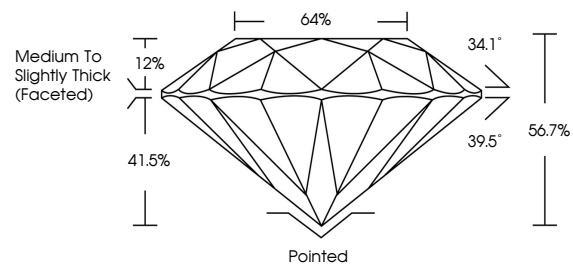
Carat Weight **4.99 CARATS**  
Color Grade **G**  
Clarity Grade **VS 2**  
Cut Grade **VERY GOOD**

**ADDITIONAL GRADING INFORMATION**

Polish **GOOD**  
Symmetry **GOOD**  
Fluorescence **NONE**  
Inscription(s) **IGI LG653411558**

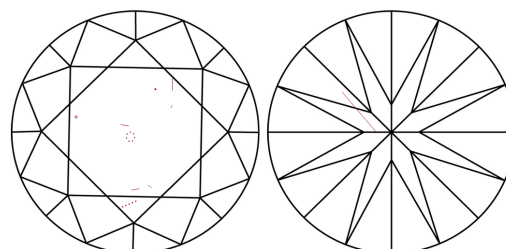
Comments: This Laboratory Grown Diamond was created by Chemical Vapor Deposition (CVD) growth process.  
Type IIa

**PROPORTIONS**



Sample Image Used

**CLARITY CHARACTERISTICS**



**KEY TO SYMBOLS**

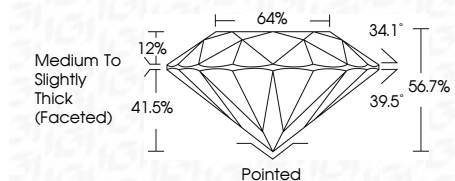
Red symbols indicate internal characteristics.  
Green symbols indicate external characteristics.

**COLOR**

D E F G H I J Faint Very Light Light

**CLARITY**

IF	VS <sup>1-2</sup>	VS <sup>1-2</sup>	SI <sup>1-2</sup>	I <sup>1-3</sup>
Internally Flawless	Very Very Slightly Included	Very Slightly Included	Slightly Included	Included



**ADDITIONAL GRADING INFORMATION**

Polish **GOOD**  
Symmetry **GOOD**  
Fluorescence **NONE**  
Inscription(s) **IGI LG653411558**  
Comments: This Laboratory Grown Diamond was created by Chemical Vapor Deposition (CVD) growth process.  
Type IIa



**IGI**



September 30, 2024  
IGI Report No LG653411558  
**ROUND BRILLIANT**  
11.11 - 11.30 X 6.36 MM  
4.99 CARATS  
G  
VS 2  
VERY GOOD  
56.7%  
64%  
Medium To Slightly Thick (Faceted)  
Pointed  
GOOD  
GOOD  
NONE  
IGI LG653411558  
Inscriptions(s)  
Comments: This Laboratory Grown Diamond was created by Chemical Vapor Deposition (CVD) growth process.  
Type IIa