



ELECTRONIC COPY

LG653411566  
Report verification at igi.org



September 30, 2024  
IGI Report Number **LG653411566**  
Description **LABORATORY GROWN DIAMOND**  
Shape and Cutting Style **ROUND BRILLIANT**  
Measurements **11.13 - 11.23 X 6.56 MM**  
**GRADING RESULTS**  
Carat Weight **5.01 CARATS**  
Color Grade **G**  
Clarity Grade **VS 1**  
Cut Grade **EXCELLENT**

September 30, 2024  
IGI Report Number **LG653411566**  
Description **LABORATORY GROWN DIAMOND**  
Shape and Cutting Style **ROUND BRILLIANT**  
Measurements **11.13 - 11.23 X 6.56 MM**

GRADING RESULTS

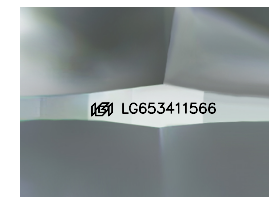
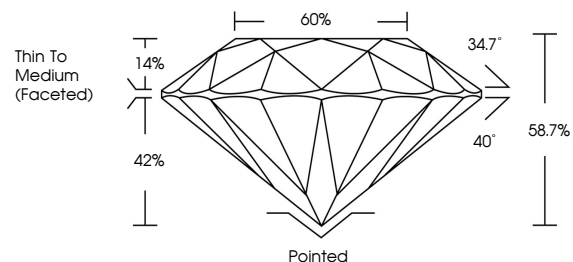
Carat Weight **5.01 CARATS**  
Color Grade **G**  
Clarity Grade **VS 1**  
Cut Grade **EXCELLENT**

ADDITIONAL GRADING INFORMATION

Polish **VERY GOOD**  
Symmetry **VERY GOOD**  
Fluorescence **NONE**  
Inscription(s) **IGI LG653411566**

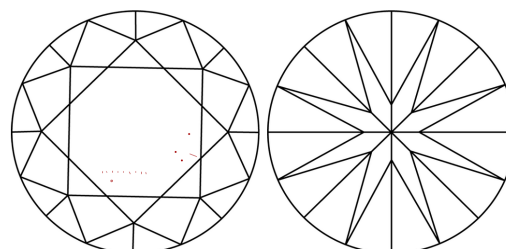
Comments: This Laboratory Grown Diamond was created by Chemical Vapor Deposition (CVD) growth process.  
Type IIa

PROPORTIONS



Sample Image Used

CLARITY CHARACTERISTICS



KEY TO SYMBOLS

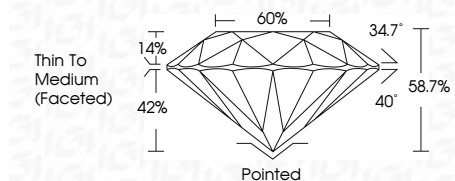
Red symbols indicate internal characteristics.  
Green symbols indicate external characteristics.

COLOR

D E F G H I J Faint Very Light Light

CLARITY

IF VS 1-2 VS 1-2 SI 1-2 I 1-3  
Internally Flawless Very Very Slightly Included Very Slightly Included Slightly Included Included



ADDITIONAL GRADING INFORMATION

Polish **VERY GOOD**  
Symmetry **VERY GOOD**  
Fluorescence **NONE**  
Inscription(s) **IGI LG653411566**  
Comments: This Laboratory Grown Diamond was created by Chemical Vapor Deposition (CVD) growth process.  
Type IIa



September 30, 2024  
IGI Report No LG653411566  
ROUND BRILLIANT  
11.13 - 11.23 X 6.56 MM  
Carat Weight 5.01 CARATS  
Color Grade G  
Clarity Grade VS 1  
Depth 58.7%  
Table 60%  
Girdle Thin To Medium (Faceted)  
Culet Pointed  
Polish VERY GOOD  
Symmetry VERY GOOD  
Fluorescence NONE  
Inscriptions(s) IGI LG653411566  
Comments: This Laboratory Grown Diamond was created by Chemical Vapor Deposition (CVD) growth process.  
Type IIa