



ELECTRONIC COPY

LG653411572
Report verification at igi.org



September 30, 2024

IGI Report Number **LG653411572**

Description **LABORATORY GROWN DIAMOND**

Shape and Cutting Style **ROUND BRILLIANT**

Measurements **10.91 - 11.02 X 6.58 MM**

GRADING RESULTS

Carat Weight **5.01 CARATS**

Color Grade **G**

Clarity Grade **VS 2**

Cut Grade **VERY GOOD**

September 30, 2024
IGI Report Number **LG653411572**
Description **LABORATORY GROWN DIAMOND**
Shape and Cutting Style **ROUND BRILLIANT**
Measurements **10.91 - 11.02 X 6.58 MM**

GRADING RESULTS

Carat Weight **5.01 CARATS**

Color Grade **G**

Clarity Grade **VS 2**

Cut Grade **VERY GOOD**

ADDITIONAL GRADING INFORMATION

Polish **VERY GOOD**

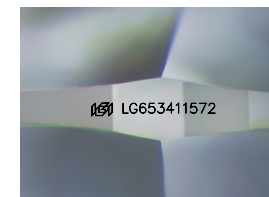
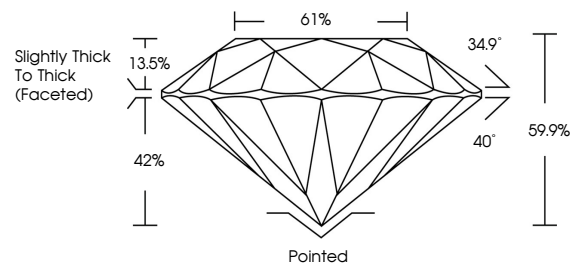
Symmetry **GOOD**

Fluorescence **NONE**

Inscription(s) **LG653411572**

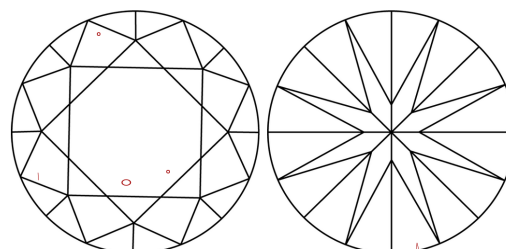
Comments: This Laboratory Grown Diamond was created by Chemical Vapor Deposition (CVD) growth process.
Type IIa

PROPORTIONS



Sample Image Used

CLARITY CHARACTERISTICS



KEY TO SYMBOLS

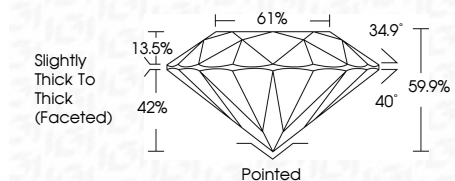
Red symbols indicate internal characteristics.
Green symbols indicate external characteristics.

COLOR

D E F G H I J Faint Very Light Light

CLARITY

IF VS 1-2 VS 1-2 SI 1-2 I 1-3
Internally Flawless Very Very Slightly Included Very Slightly Included Slightly Included Included



ADDITIONAL GRADING INFORMATION

Polish **VERY GOOD**

Symmetry **GOOD**

Fluorescence **NONE**

Inscription(s) **LG653411572**

Comments: This Laboratory Grown Diamond was created by Chemical Vapor Deposition (CVD) growth process.
Type IIa



IGI



September 30, 2024
IGI Report No. LG653411572
ROUND BRILLIANT
10.91 - 11.02 X 6.58 MM
5.01 CARATS
Color Grade G
Clarity Grade VS 2
Depth 61.9%
Table 61%
Girdle Slightly Thick To Thick (Faceted)
Culet Pointed
Polish VERY GOOD
Symmetry GOOD
Fluorescence NONE
Inscription(s) LG653411572
Comments: This Laboratory Grown Diamond was created by Chemical Vapor Deposition (CVD) growth process.
Type IIa