



ELECTRONIC COPY

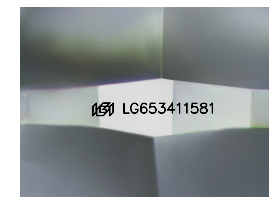
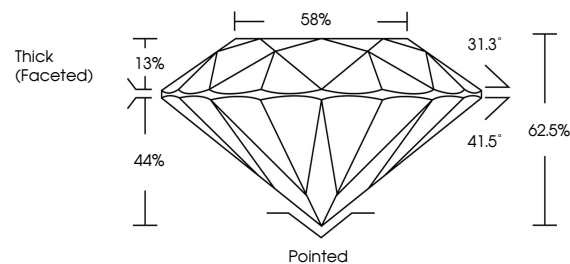
LG653411581
Report verification at igi.org



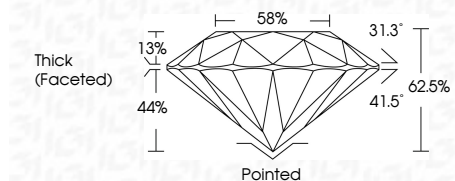
September 30, 2024
IGI Report Number: LG653411581
Description: LABORATORY GROWN DIAMOND
Shape and Cutting Style: ROUND BRILLIANT
Measurements: 10.79 - 10.92 X 6.79 MM
Grading Results:
Carat Weight: 5.02 CARATS
Color Grade: G
Clarity Grade: VS 1
Cut Grade: VERY GOOD

September 30, 2024
IGI Report Number: LG653411581
Description: LABORATORY GROWN DIAMOND
Shape and Cutting Style: ROUND BRILLIANT
Measurements: 10.79 - 10.92 X 6.79 MM

PROPORTIONS



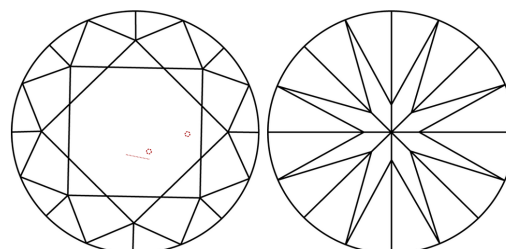
Sample Image Used



GRADING RESULTS

Carat Weight: 5.02 CARATS
Color Grade: G
Clarity Grade: VS 1
Cut Grade: VERY GOOD

CLARITY CHARACTERISTICS



KEY TO SYMBOLS

Red symbols indicate internal characteristics.
Green symbols indicate external characteristics.

ADDITIONAL GRADING INFORMATION

Polish: VERY GOOD
Symmetry: VERY GOOD
Fluorescence: NONE
Inscription(s): IGI LG653411581

ADDITIONAL GRADING INFORMATION

Polish: VERY GOOD
Symmetry: VERY GOOD
Fluorescence: NONE
Inscription(s): IGI LG653411581
Comments: This Laboratory Grown Diamond was created by Chemical Vapor Deposition (CVD) growth process. Type IIa

COLOR

D E F G H I J Faint Very Light Light

CLARITY

IF VS 1-2 VS 1-2 SI 1-2 I 1-3
Internally Flawless Very Very Slightly Included Very Slightly Included Slightly Included Included



September 30, 2024
IGI Report No. LG653411581
ROUND BRILLIANT
5.02 CARATS G
10.79 - 10.92 X 6.79 MM
Carat Weight: 5.02 CARATS
Color Grade: G
Clarity Grade: VS 1
Depth: 62.5%
Table: 58%
Girdle: Thick (Faceted)
Culet: Pointed
Polish: VERY GOOD
Symmetry: VERY GOOD
Fluorescence: NONE
Inscriptions(s): IGI LG653411581
Comments: This Laboratory Grown Diamond was created by Chemical Vapor Deposition (CVD) growth process. Type IIa