



ELECTRONIC COPY

LG653411591
Report verification at igi.org



September 30, 2024

IGI Report Number LG653411591

Description LABORATORY GROWN DIAMOND

Shape and Cutting Style ROUND BRILLIANT

Measurements 10.78 - 10.89 X 6.75 MM

GRADING RESULTS

Carat Weight 5.01 CARATS

Color Grade G

Clarity Grade VS 2

Cut Grade VERY GOOD

September 30, 2024
IGI Report Number LG653411591
Description LABORATORY GROWN DIAMOND
Shape and Cutting Style ROUND BRILLIANT
Measurements 10.78 - 10.89 X 6.75 MM

GRADING RESULTS

Carat Weight 5.01 CARATS

Color Grade G

Clarity Grade VS 2

Cut Grade VERY GOOD

ADDITIONAL GRADING INFORMATION

Polish VERY GOOD

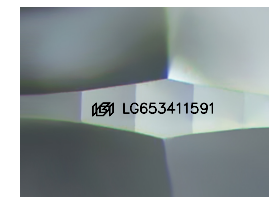
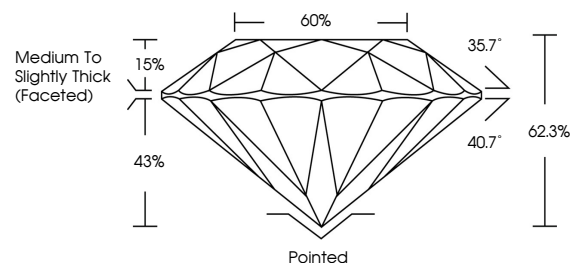
Symmetry GOOD

Fluorescence NONE

Inscription(s) IGI LG653411591

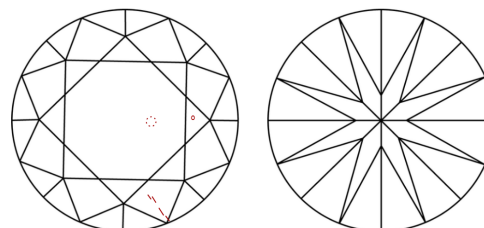
Comments: This Laboratory Grown Diamond was created by Chemical Vapor Deposition (CVD) growth process. Type IIa

PROPORTIONS



Sample Image Used

CLARITY CHARACTERISTICS



KEY TO SYMBOLS

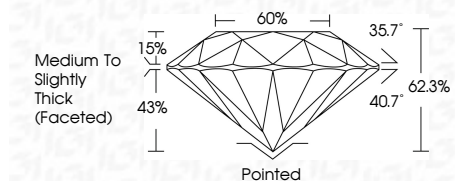
Red symbols indicate internal characteristics. Green symbols indicate external characteristics.

COLOR

D E F G H I J Faint Very Light Light

CLARITY

Table with columns: IF, VS 1-2, VS 1-2, SI 1-2, I 1-3 and rows: Internally Flawless, Very Very Slightly Included, Very Slightly Included, Slightly Included, Included



ADDITIONAL GRADING INFORMATION

Polish VERY GOOD

Symmetry GOOD

Fluorescence NONE

Inscription(s) IGI LG653411591

Comments: This Laboratory Grown Diamond was created by Chemical Vapor Deposition (CVD) growth process. Type IIa



IGI



Summary of report details including date, report number, description, measurements, grading results, and additional information.