



ELECTRONIC COPY

LG653411593
Report verification at igi.org



September 30, 2024

IGI Report Number **LG653411593**

Description **LABORATORY GROWN DIAMOND**

Shape and Cutting Style **ROUND BRILLIANT**

Measurements **11.06 - 11.10 X 6.55 MM**

GRADING RESULTS

Carat Weight **5.02 CARATS**

Color Grade **H**

Clarity Grade **VS 1**

Cut Grade **VERY GOOD**

September 30, 2024
IGI Report Number **LG653411593**
Description **LABORATORY GROWN DIAMOND**
Shape and Cutting Style **ROUND BRILLIANT**
Measurements **11.06 - 11.10 X 6.55 MM**

GRADING RESULTS

Carat Weight **5.02 CARATS**

Color Grade **H**

Clarity Grade **VS 1**

Cut Grade **VERY GOOD**

ADDITIONAL GRADING INFORMATION

Polish **GOOD**

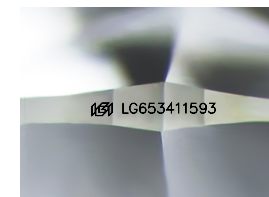
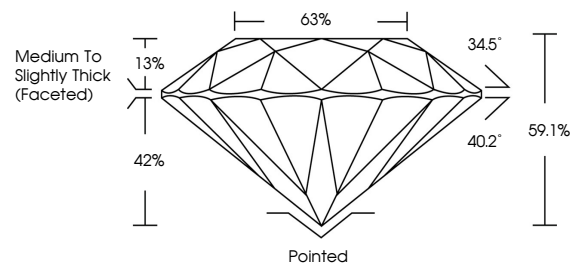
Symmetry **VERY GOOD**

Fluorescence **NONE**

Inscription(s) **LG653411593**

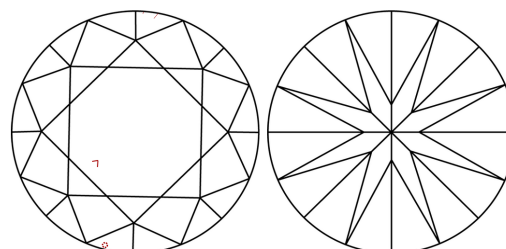
Comments: This Laboratory Grown Diamond was created by Chemical Vapor Deposition (CVD) growth process.
Type IIa

PROPORTIONS



Sample Image Used

CLARITY CHARACTERISTICS



KEY TO SYMBOLS

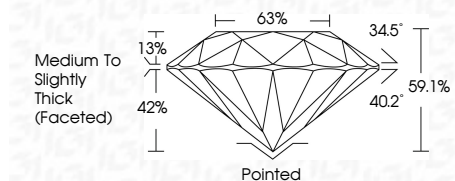
Red symbols indicate internal characteristics.
Green symbols indicate external characteristics.

COLOR

D E F G H I J Faint Very Light Light

CLARITY

IF	VS ¹⁻²	VS ¹⁻²	SI ¹⁻²	I ¹⁻³
Internally Flawless	Very Very Slightly Included	Very Slightly Included	Slightly Included	Included



ADDITIONAL GRADING INFORMATION

Polish **GOOD**

Symmetry **VERY GOOD**

Fluorescence **NONE**

Inscription(s) **LG653411593**

Comments: This Laboratory Grown Diamond was created by Chemical Vapor Deposition (CVD) growth process.
Type IIa



IGI



September 30, 2024
IGI Report No LG653411593
ROUND BRILLIANT

5.02 CARATS
H
Color Grade

VS 1
VERY GOOD
Clarity Grade

68%
Medium To Slightly Thick (Faceted)
Depth

63%
Pointed
Cut Grade

GOOD
VERY GOOD
Polish
Symmetry

NONE
NONE
Fluorescence

IGI LG653411593
Inscription(s)

Comments: This Laboratory Grown Diamond was created by Chemical Vapor Deposition (CVD) growth process.
Type IIa