



ELECTRONIC COPY

LG653411609 Report verification at igi.org



September 30, 2024

IGI Report Number LG653411609

Description LABORATORY GROWN DIAMOND

Shape and Cutting Style ROUND BRILLIANT

Measurements 11.25 - 11.31 X 6.45 MM

GRADING RESULTS

Carat Weight 5.03 CARATS

Color Grade H

Clarity Grade VVS 2

Cut Grade VERY GOOD

September 30, 2024
IGI Report Number LG653411609
Description LABORATORY GROWN DIAMOND
Shape and Cutting Style ROUND BRILLIANT
Measurements 11.25 - 11.31 X 6.45 MM

GRADING RESULTS

Carat Weight 5.03 CARATS

Color Grade H

Clarity Grade VVS 2

Cut Grade VERY GOOD

ADDITIONAL GRADING INFORMATION

Polish VERY GOOD

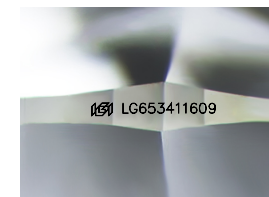
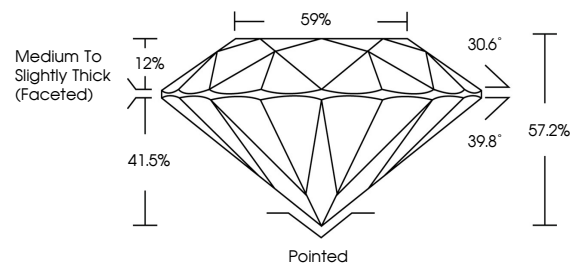
Symmetry VERY GOOD

Fluorescence NONE

Inscription(s) IGI LG653411609

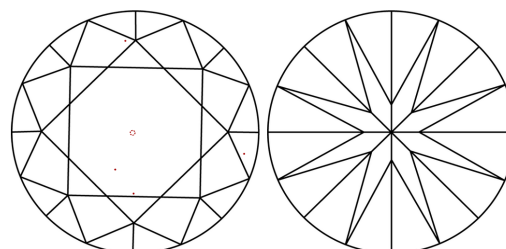
Comments: This Laboratory Grown Diamond was created by Chemical Vapor Deposition (CVD) growth process. Type IIa

PROPORTIONS



Sample Image Used

CLARITY CHARACTERISTICS



KEY TO SYMBOLS

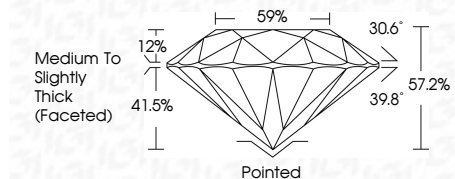
Red symbols indicate internal characteristics. Green symbols indicate external characteristics.

COLOR

D E F G H I J Faint Very Light Light

CLARITY

Table with columns for clarity grades: IF, VVS 1-2, VS 1-2, SI 1-2, I 1-3 and their corresponding descriptions: Internally Flawless, Very Very Slightly Included, Very Slightly Included, Slightly Included, Included.



ADDITIONAL GRADING INFORMATION

Polish VERY GOOD

Symmetry VERY GOOD

Fluorescence NONE

Inscription(s) IGI LG653411609

Comments: This Laboratory Grown Diamond was created by Chemical Vapor Deposition (CVD) growth process. Type IIa



Summary of report details including date, report number, description, measurements, grading results (5.03 CARATS, H, VVS 2, VERY GOOD), and additional information (Polish, Symmetry, Fluorescence, Inscription(s)).