



**ELECTRONIC COPY**

LG653411622  
Report verification at igi.org



September 30, 2024

IGI Report Number **LG653411622**

Description **LABORATORY GROWN DIAMOND**

Shape and Cutting Style **ROUND BRILLIANT**

Measurements **11.09 - 11.17 X 6.50 MM**

**GRADING RESULTS**

Carat Weight **5.02 CARATS**

Color Grade **F**

Clarity Grade **VS 2**

Cut Grade **VERY GOOD**

September 30, 2024  
IGI Report Number **LG653411622**  
Description **LABORATORY GROWN DIAMOND**  
Shape and Cutting Style **ROUND BRILLIANT**  
Measurements **11.09 - 11.17 X 6.50 MM**

**GRADING RESULTS**

Carat Weight **5.02 CARATS**

Color Grade **F**

Clarity Grade **VS 2**

Cut Grade **VERY GOOD**

**ADDITIONAL GRADING INFORMATION**

Polish **VERY GOOD**

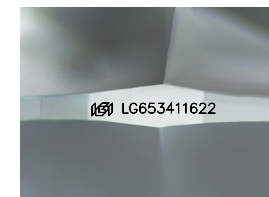
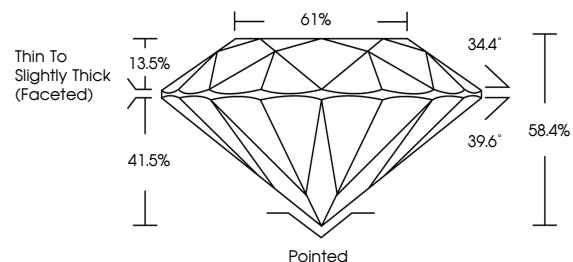
Symmetry **VERY GOOD**

Fluorescence **NONE**

Inscription(s) **LG653411622**

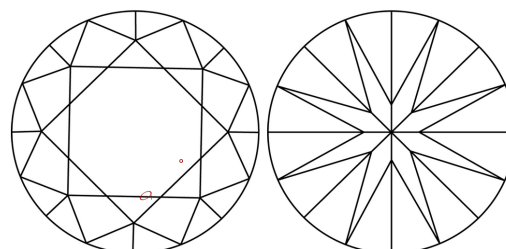
Comments: This Laboratory Grown Diamond was created by Chemical Vapor Deposition (CVD) growth process.  
Type IIa

**PROPORTIONS**



Sample Image Used

**CLARITY CHARACTERISTICS**



**KEY TO SYMBOLS**

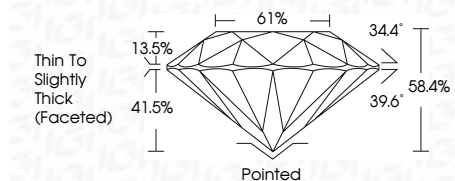
Red symbols indicate internal characteristics.  
Green symbols indicate external characteristics.

**COLOR**

D E F G H I J Faint Very Light Light

**CLARITY**

IF	VS <sup>1-2</sup>	VS <sup>1-2</sup>	SI <sup>1-2</sup>	I <sup>1-3</sup>
Internally Flawless	Very Very Slightly Included	Very Slightly Included	Slightly Included	Included



**ADDITIONAL GRADING INFORMATION**

Polish **VERY GOOD**

Symmetry **VERY GOOD**

Fluorescence **NONE**

Inscription(s) **LG653411622**

Comments: This Laboratory Grown Diamond was created by Chemical Vapor Deposition (CVD) growth process.  
Type IIa



**IGI**



September 30, 2024  
IGI Report No LG653411622  
**ROUND BRILLIANT**

**5.02 CARATS**  
F

**VERY GOOD**  
VS 2

**VERY GOOD**  
61%  
61%  
Thin To Slightly Thick (Faceted)

**Pointed**  
VERY GOOD  
VERY GOOD  
VERY GOOD  
NONE  
NONE

LG653411622

Comments: This Laboratory Grown Diamond was created by Chemical Vapor Deposition (CVD) growth process.  
Type IIa