



ELECTRONIC COPY

LG653411795 Report verification at igi.org

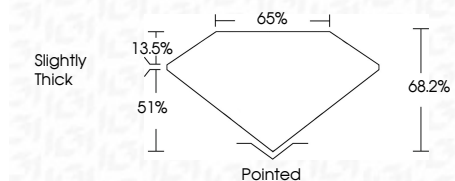


October 3, 2024 IGI Report Number LG653411795 Description LABORATORY GROWN DIAMOND Shape and Cutting Style CUT CORNERED RECTANGULAR MODIFIED BRILLIANT

Measurements 8.98 X 6.22 X 4.24 MM

GRADING RESULTS

Carat Weight 2.04 CARATS Color Grade F Clarity Grade VVS 2



ADDITIONAL GRADING INFORMATION

Polish EXCELLENT Symmetry EXCELLENT Fluorescence NONE Inscription(s) LG653411795

Comments: This Laboratory Grown Diamond was created by Chemical Vapor Deposition (CVD) growth process. Type IIa



October 3, 2024 IGI Report No LG653411795 CUT CORNERED RECT. MODIFIED BRILLIANT 8.98 X 6.22 X 4.24 MM 2.04 CARATS F VVS 2 68.2% 65% Slightly Thick Pointed EXCELLENT EXCELLENT NONE NONE LG653411795

Comments: This Laboratory Grown Diamond was created by Chemical Vapor Deposition (CVD) growth process. Type IIa

LABORATORY GROWN DIAMOND REPORT

October 3, 2024 IGI Report Number LG653411795 Description LABORATORY GROWN DIAMOND Shape and Cutting Style CUT CORNERED RECTANGULAR MODIFIED BRILLIANT Measurements 8.98 X 6.22 X 4.24 MM

GRADING RESULTS

Carat Weight 2.04 CARATS Color Grade F Clarity Grade VVS 2

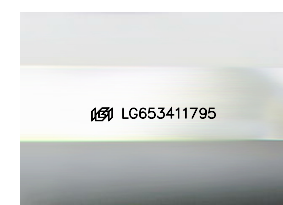
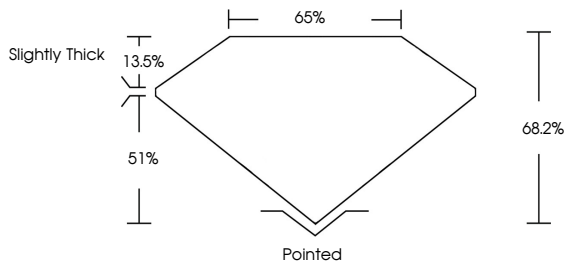
ADDITIONAL GRADING INFORMATION

Polish EXCELLENT Symmetry EXCELLENT Fluorescence NONE

Inscription(s) LG653411795

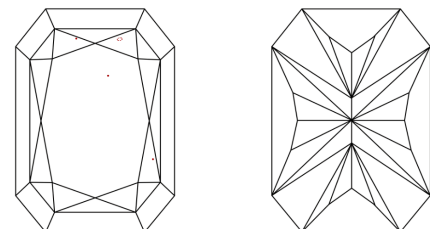
Comments: This Laboratory Grown Diamond was created by Chemical Vapor Deposition (CVD) growth process. Type IIa

PROPORTIONS



Sample Image Used

CLARITY CHARACTERISTICS



KEY TO SYMBOLS

Red symbols indicate internal characteristics. Green symbols indicate external characteristics.

COLOR

D E F G H I J Faint Very Light Light

CLARITY

IF VVS 1-2 VS 1-2 SI 1-2 I 1-3 Internally Flawless Very Very Slightly Included Very Slightly Included Slightly Included Included

