



**ELECTRONIC COPY**

LG653411877  
Report verification at [igi.org](http://igi.org)



October 3, 2024

IGI Report Number **LG653411877**

Description **LABORATORY GROWN DIAMOND**

Shape and Cutting Style **EMERALD CUT**

Measurements **8.49 X 6.09 X 4.01 MM**

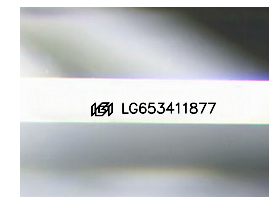
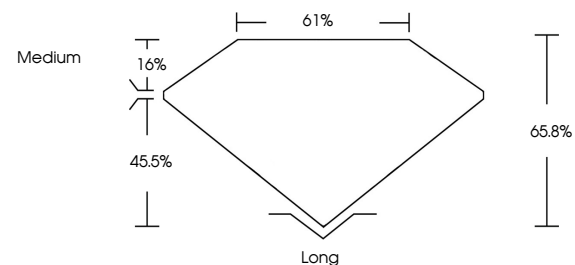
**GRADING RESULTS**

Carat Weight **2.10 CARATS**

Color Grade **E**

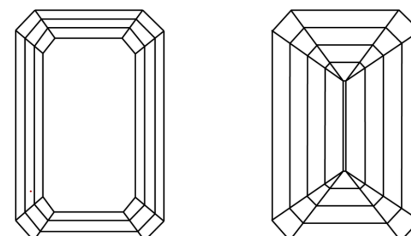
Clarity Grade **VVS 2**

**PROPORTIONS**



Sample Image Used

**CLARITY CHARACTERISTICS**



**KEY TO SYMBOLS**

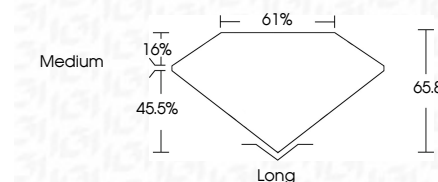
Red symbols indicate internal characteristics.  
Green symbols indicate external characteristics.

**COLOR**

D E F G H I J Faint Very Light Light

**CLARITY**

IF	VS <sup>1-2</sup>	VS <sup>1-2</sup>	SI <sup>1-2</sup>	I <sup>1-3</sup>
Internally Flawless	Very Very Slightly Included	Very Slightly Included	Slightly Included	Included



**ADDITIONAL GRADING INFORMATION**

Polish **EXCELLENT**

Symmetry **VERY GOOD**

Fluorescence **NONE**

Inscription(s) **IGI LG653411877**

Comments: This Laboratory Grown Diamond was created by Chemical Vapor Deposition (CVD) growth process.  
Type IIa



**IGI**

October 3, 2024  
IGI Report No. LG653411877  
**EMERALD CUT**

**8.49 X 6.09 X 4.01 MM**

Carat Weight **2.10 CARATS**

Color Grade **E**

Clarity Grade **VVS 2**

Depth **45.5%**

Table **1.6%**

Girdle **Medium**

Culet **Long**

Polish **EXCELLENT**

Symmetry **VERY GOOD**

Fluorescence **NONE**

Inscription(s) **IGI LG653411877**

Comments: This Laboratory Grown Diamond was created by Chemical Vapor Deposition (CVD) growth process.  
Type IIa