



**ELECTRONIC COPY**

LG653412197  
Report verification at igi.org



October 1, 2024

IGI Report Number **LG653412197**

Description **LABORATORY GROWN DIAMOND**

Shape and Cutting Style **EMERALD CUT**

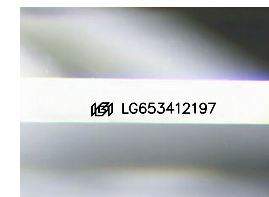
Measurements **9.66 X 6.93 X 4.69 MM**

**GRADING RESULTS**

Carat Weight **3.08 CARATS**

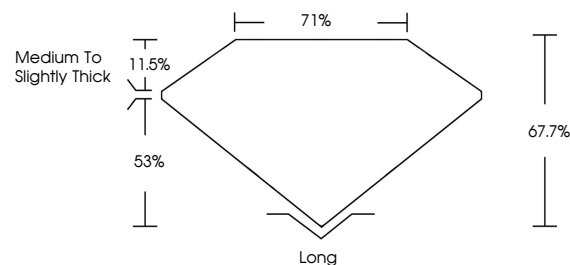
Color Grade **E**

Clarity Grade **VS 2**

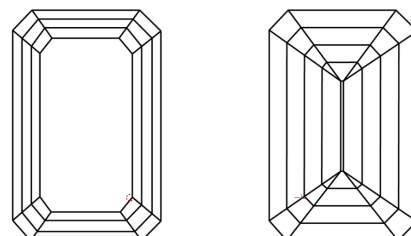


Sample Image Used

**PROPORTIONS**



**CLARITY CHARACTERISTICS**



**KEY TO SYMBOLS**

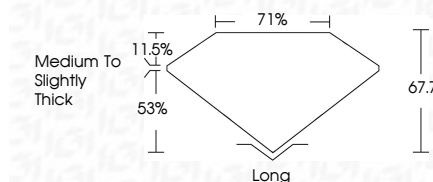
Red symbols indicate internal characteristics.  
Green symbols indicate external characteristics.

**COLOR**

D E F G H I J Faint Very Light Light

**CLARITY**

|                     |                             |                        |                   |                  |
|---------------------|-----------------------------|------------------------|-------------------|------------------|
| IF                  | VS <sup>1-2</sup>           | VS <sup>1-2</sup>      | SI <sup>1-2</sup> | I <sup>1-3</sup> |
| Internally Flawless | Very Very Slightly Included | Very Slightly Included | Slightly Included | Included         |



**ADDITIONAL GRADING INFORMATION**

Polish **EXCELLENT**

Symmetry **EXCELLENT**

Fluorescence **NONE**

Inscription(s) **IGI LG653412197**

Comments: This Laboratory Grown Diamond was created by Chemical Vapor Deposition (CVD) growth process.  
Type IIa



**IGI**



October 1, 2024  
IGI Report No LG653412197  
**EMERALD CUT**  
9.66 X 6.93 X 4.69 MM  
3.08 CARATS  
E  
VS 2  
67.7%  
71%  
Medium to Slightly Thick  
Long  
EXCELLENT  
EXCELLENT  
NONE  
IGI LG653412197  
Comments: This Laboratory Grown Diamond was created by Chemical Vapor Deposition (CVD) growth process.  
Type IIa