



ELECTRONIC COPY

LG653412250
Report verification at igi.org



October 1, 2024

IGI Report Number **LG653412250**

Description **LABORATORY GROWN DIAMOND**

Shape and Cutting Style **PRINCESS CUT**

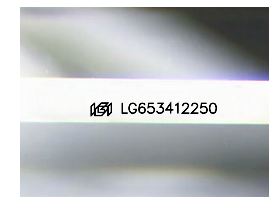
Measurements **8.65 X 8.59 X 6.06 MM**

GRADING RESULTS

Carat Weight **4.00 CARATS**

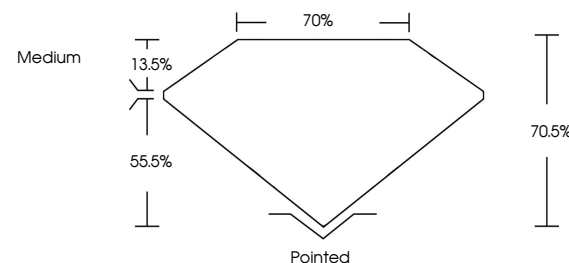
Color Grade **F**

Clarity Grade **VS 1**

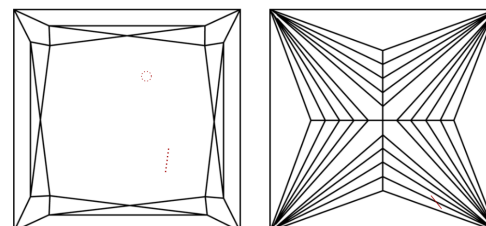


Sample Image Used

PROPORTIONS



CLARITY CHARACTERISTICS



KEY TO SYMBOLS

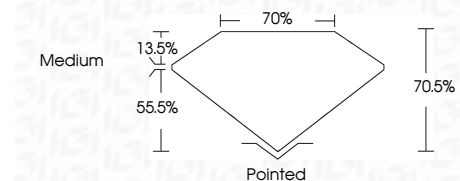
Red symbols indicate internal characteristics.
Green symbols indicate external characteristics.

COLOR

D E F G H I J Faint Very Light Light

CLARITY

IF	VS ¹⁻²	VS ¹⁻²	SI ¹⁻²	I ¹⁻³
Internally Flawless	Very Very Slightly Included	Very Slightly Included	Slightly Included	Included



ADDITIONAL GRADING INFORMATION

Polish **EXCELLENT**

Symmetry **EXCELLENT**

Fluorescence **NONE**

Inscription(s) **IGI LG653412250**

Comments: This Laboratory Grown Diamond was created by Chemical Vapor Deposition (CVD) growth process.
Type IIa



IGI



October 1, 2024
IGI Report No LG653412250
PRINCESS CUT

4.00 CARATS
F

8.65 X 8.59 X 6.06 MM
Color Grade
Clarity Grade
Table
Depth
Girdle
Medium

Pointed
EXCELLENT
Symmetry
Fluorescence
None
IGI LG653412250

Comments: This Laboratory Grown Diamond was created by Chemical Vapor Deposition (CVD) growth process.
Type IIa