



ELECTRONIC COPY

LG653412329
Report verification at igi.org



October 5, 2024
IGI Report Number **LG653412329**
Description **LABORATORY GROWN DIAMOND**
Shape and Cutting Style **PRINCESS CUT**
Measurements **8.66 X 8.65 X 6.18 MM**
GRADING RESULTS
Carat Weight **4.09 CARATS**
Color Grade **I**
Clarity Grade **VVS 2**

LABORATORY GROWN DIAMOND REPORT

October 5, 2024
IGI Report Number **LG653412329**
Description **LABORATORY GROWN DIAMOND**
Shape and Cutting Style **PRINCESS CUT**
Measurements **8.66 X 8.65 X 6.18 MM**

GRADING RESULTS

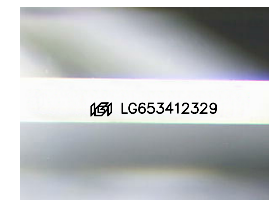
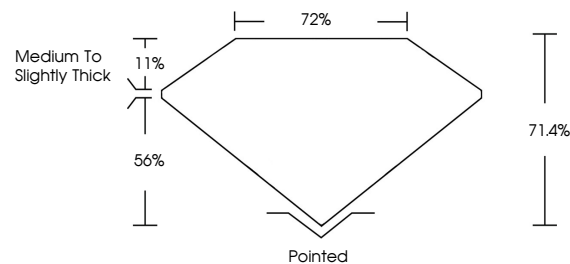
Carat Weight **4.09 CARATS**
Color Grade **I**
Clarity Grade **VVS 2**

ADDITIONAL GRADING INFORMATION

Polish **EXCELLENT**
Symmetry **EXCELLENT**
Fluorescence **NONE**
Inscription(s) **IGI LG653412329**

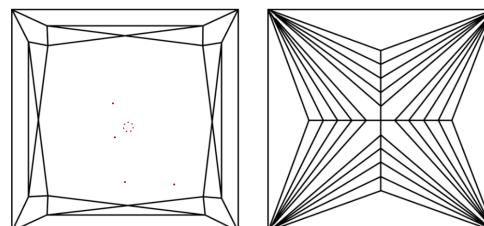
Comments: This Laboratory Grown Diamond was created by Chemical Vapor Deposition (CVD) growth process.
Type IIa

PROPORTIONS



Sample Image Used

CLARITY CHARACTERISTICS



KEY TO SYMBOLS

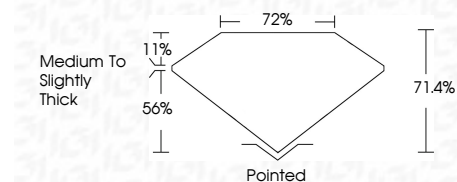
Red symbols indicate internal characteristics.
Green symbols indicate external characteristics.

COLOR

D E F G H I J Faint Very Light Light

CLARITY

IF	VS ¹⁻²	VS ¹⁻²	SI ¹⁻²	I ¹⁻³
Internally Flawless	Very Very Slightly Included	Very Slightly Included	Slightly Included	Included



ADDITIONAL GRADING INFORMATION

Polish **EXCELLENT**
Symmetry **EXCELLENT**
Fluorescence **NONE**
Inscription(s) **IGI LG653412329**
Comments: This Laboratory Grown Diamond was created by Chemical Vapor Deposition (CVD) growth process.
Type IIa



IGI



October 5, 2024
IGI Report No **LG653412329**
PRINCESS CUT
8.66 X 8.65 X 6.18 MM
Carat Weight **4.09 CARATS**
Color Grade **I**
Clarity Grade **VVS 2**
Depth **71.4%**
Table **72%**
Girdle **Medium to Slightly Thick**
Culet **Pointed**
Polish **EXCELLENT**
Symmetry **EXCELLENT**
Fluorescence **NONE**
Inscription(s) **IGI LG653412329**
Comments: This Laboratory Grown Diamond was created by Chemical Vapor Deposition (CVD) growth process.
Type IIa