



ELECTRONIC COPY

LG653412587
Report verification at igi.org



October 1, 2024

IGI Report Number **LG653412587**

Description **LABORATORY GROWN DIAMOND**

Shape and Cutting Style **PRINCESS CUT**

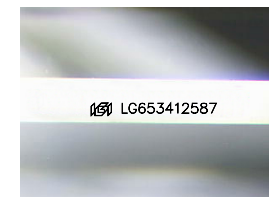
Measurements **6.57 X 6.38 X 4.00 MM**

GRADING RESULTS

Carat Weight **1.49 CARAT**

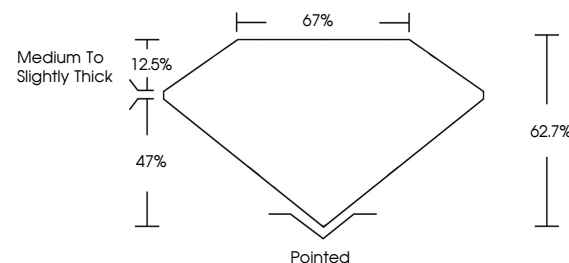
Color Grade **E**

Clarity Grade **VS 1**

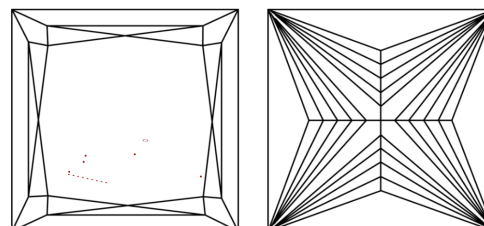


Sample Image Used

PROPORTIONS



CLARITY CHARACTERISTICS



KEY TO SYMBOLS

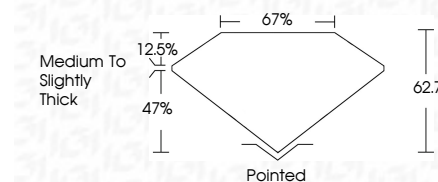
Red symbols indicate internal characteristics.
Green symbols indicate external characteristics.

COLOR

D E F G H I J Faint Very Light Light

CLARITY

| | | | | |
|---------------------|-----------------------------|------------------------|-------------------|------------------|
| IF | VS ¹⁻² | VS ¹⁻² | SI ¹⁻² | I ¹⁻³ |
| Internally Flawless | Very Very Slightly Included | Very Slightly Included | Slightly Included | Included |



ADDITIONAL GRADING INFORMATION

Polish **VERY GOOD**

Symmetry **GOOD**

Fluorescence **NONE**

Inscription(s) **IGI LG653412587**

Comments: This Laboratory Grown Diamond was created by Chemical Vapor Deposition (CVD) growth process.
Type IIa



IGI

October 1, 2024
IGI Report No. LG653412587
PRINCESS CUT
6.57 X 6.38 X 4.00 MM
1.49 CARAT
Color Grade E
Clarity Grade VS 1
Depth 47%
Table 12.5%
Girdle Medium to Slightly Thick
Culet Pointed
Polish VERY GOOD
Symmetry GOOD
Fluorescence NONE
Inscription(s) IGI LG653412587

Comments: This Laboratory Grown Diamond was created by Chemical Vapor Deposition (CVD) growth process.
Type IIa