



**ELECTRONIC COPY**

LG653413426  
Report verification at [igi.org](http://igi.org)



October 7, 2024

IGI Report Number **LG653413426**

Description **LABORATORY GROWN DIAMOND**

Shape and Cutting Style **ROUND BRILLIANT**

Measurements **8.14 - 8.19 X 5.10 MM**

**GRADING RESULTS**

Carat Weight **2.07 CARATS**

Color Grade **H**

Clarity Grade **VVS 1**

Cut Grade **IDEAL**

October 7, 2024  
IGI Report Number **LG653413426**  
Description **LABORATORY GROWN DIAMOND**  
Shape and Cutting Style **ROUND BRILLIANT**  
Measurements **8.14 - 8.19 X 5.10 MM**

**GRADING RESULTS**

Carat Weight **2.07 CARATS**

Color Grade **H**

Clarity Grade **VVS 1**

Cut Grade **IDEAL**

**ADDITIONAL GRADING INFORMATION**

Polish **EXCELLENT**

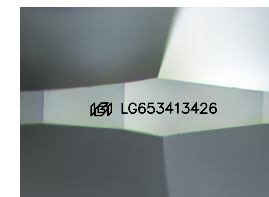
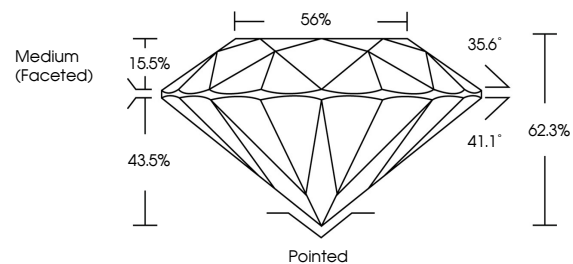
Symmetry **EXCELLENT**

Fluorescence **NONE**

Inscription(s) **LG653413426**

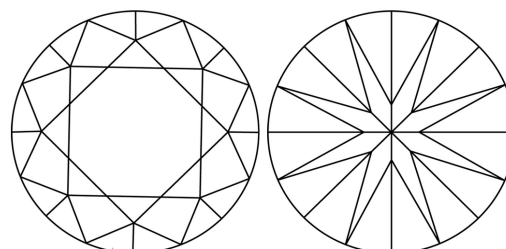
Comments: This Laboratory Grown Diamond was created by Chemical Vapor Deposition (CVD) growth process.  
Type IIa

**PROPORTIONS**



Sample Image Used

**CLARITY CHARACTERISTICS**



**KEY TO SYMBOLS**

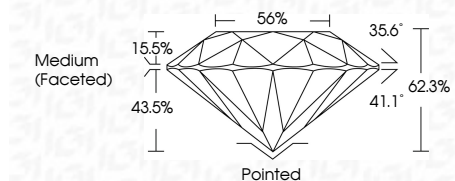
Red symbols indicate internal characteristics.  
Green symbols indicate external characteristics.

**COLOR**

D E F G H I J Faint Very Light Light

**CLARITY**

IF	VS <sup>1-2</sup>	VS <sup>1-2</sup>	SI <sup>1-2</sup>	I <sup>1-3</sup>
Internally Flawless	Very Very Slightly Included	Very Slightly Included	Slightly Included	Included



**ADDITIONAL GRADING INFORMATION**

Polish **EXCELLENT**

Symmetry **EXCELLENT**

Fluorescence **NONE**

Inscription(s) **LG653413426**

Comments: This Laboratory Grown Diamond was created by Chemical Vapor Deposition (CVD) growth process.  
Type IIa



**IGI**

October 7, 2024  
IGI Report No **LG653413426**  
**ROUND BRILLIANT**

**8.14 - 8.19 X 5.10 MM**

Carat Weight	<b>2.07 CARATS</b>
Color Grade	<b>H</b>
Clarity Grade	<b>VVS 1</b>
Cut Grade	<b>IDEAL</b>
Depth	<b>62.3%</b>
Table	<b>56%</b>
Girdle	<b>Medium (Faceted)</b>
Culet	<b>Pointed</b>
Polish	<b>EXCELLENT</b>
Symmetry	<b>EXCELLENT</b>
Fluorescence	<b>NONE</b>
Inscription(s)	<b>LG653413426</b>

Comments: This Laboratory Grown Diamond was created by Chemical Vapor Deposition (CVD) growth process.  
Type IIa