



**ELECTRONIC COPY**

LG653415271  
Report verification at igi.org



September 26, 2024

IGI Report Number **LG653415271**

Description **LABORATORY GROWN DIAMOND**

Shape and Cutting Style **ROUND BRILLIANT**

Measurements **11.08 - 11.15 X 6.68 MM**

**GRADING RESULTS**

Carat Weight **5.00 CARATS**

Color Grade **FANCY INTENSE YELLOW**

Clarity Grade **VS 1**

Cut Grade **IDEAL**

September 26, 2024

IGI Report Number **LG653415271**

Description **LABORATORY GROWN DIAMOND**

Shape and Cutting Style **ROUND BRILLIANT**

Measurements **11.08 - 11.15 X 6.68 MM**

**GRADING RESULTS**

Carat Weight **5.00 CARATS**

Color Grade **FANCY INTENSE YELLOW**

Clarity Grade **VS 1**

Cut Grade **IDEAL**

**ADDITIONAL GRADING INFORMATION**

Polish **EXCELLENT**

Symmetry **EXCELLENT**

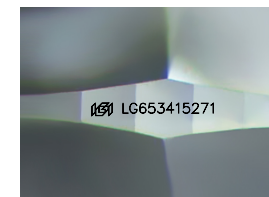
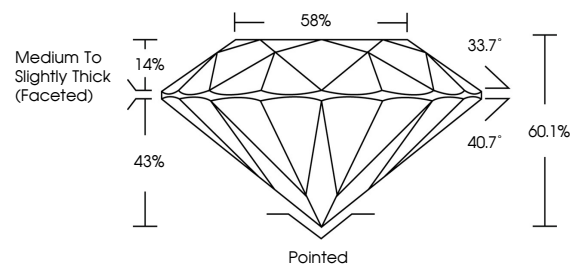
Fluorescence **SLIGHT**

Inscription(s) **LG653415271**

Comments: This Laboratory Grown Diamond was created by Chemical Vapor Deposition (CVD) growth process.

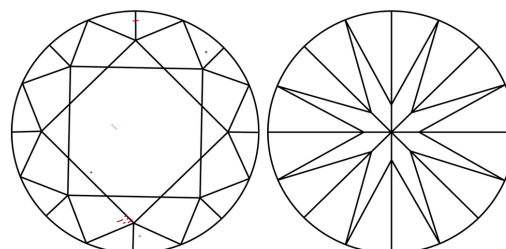
Indications of post-growth treatment.

**PROPORTIONS**



Sample Image Used

**CLARITY CHARACTERISTICS**



**KEY TO SYMBOLS**

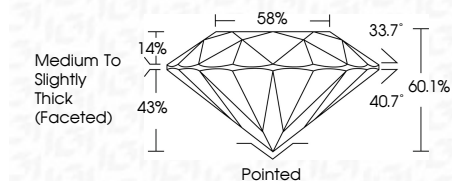
Red symbols indicate internal characteristics.  
Green symbols indicate external characteristics.

**COLOR**

D E F G H I J Faint Very Light Light

**CLARITY**

IF	VS <sup>1-2</sup>	VS <sup>1-2</sup>	SI <sup>1-2</sup>	I <sup>1-3</sup>
Internally Flawless	Very Very Slightly Included	Very Slightly Included	Slightly Included	Included



**ADDITIONAL GRADING INFORMATION**

Polish **EXCELLENT**

Symmetry **EXCELLENT**

Fluorescence **SLIGHT**

Inscription(s) **LG653415271**

Comments: This Laboratory Grown Diamond was created by Chemical Vapor Deposition (CVD) growth process. Indications of post-growth treatment.



**IGI**



September 26, 2024  
IGI Report No LG653415271  
ROUND BRILLIANT

5.00 CARATS  
FANCY INTENSE YELLOW

VS 1  
IDEAL

11.08 - 11.15 X 6.68 MM

Medium To Slightly Thick (Faceted)

Pointed  
EXCELLENT  
EXCELLENT  
SLIGHT  
SLIGHT

60.1%  
58%

IGI LG653415271

Comments: This Laboratory Grown Diamond was created by Chemical Vapor Deposition (CVD) growth process. Indications of post-growth treatment.