



ELECTRONIC COPY

LG653416671
Report verification at igi.org



September 20, 2024

IGI Report Number **LG653416671**

Description **LABORATORY GROWN DIAMOND**

Shape and Cutting Style **CUSHION BRILLIANT**

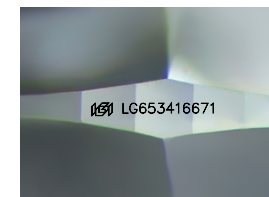
Measurements **11.92 X 8.99 X 5.96 MM**

GRADING RESULTS

Carat Weight **5.11 CARATS**

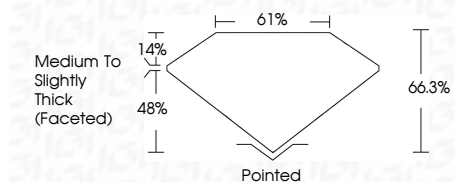
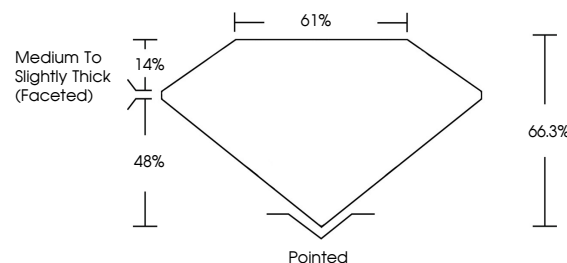
Color Grade **E**

Clarity Grade **VS 2**

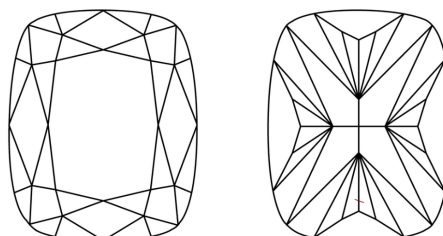


Sample Image Used

PROPORTIONS



CLARITY CHARACTERISTICS



KEY TO SYMBOLS

Red symbols indicate internal characteristics.
Green symbols indicate external characteristics.

COLOR

D E F G H I J Faint Very Light Light

CLARITY

IF	VS ¹⁻²	VS ¹⁻²	SI ¹⁻²	I ¹⁻³
Internally Flawless	Very Very Slightly Included	Very Slightly Included	Slightly Included	Included

ADDITIONAL GRADING INFORMATION

Polish **EXCELLENT**

Symmetry **EXCELLENT**

Fluorescence **NONE**

Inscription(s) **IGI LG653416671**

Comments: This Laboratory Grown Diamond was created by Chemical Vapor Deposition (CVD) growth process. Type IIa



IGI



September 20, 2024
IGI Report No LG653416671
CUSHION BRILLIANT

11.92 X 8.99 X 5.96 MM

5.11 CARATS

E

VS 2

66.3%

61%

Medium to Slightly Thick (Faceted)

Pointed

EXCELLENT

EXCELLENT

NONE

IGI LG653416671

Comments: This Laboratory Grown Diamond was created by Chemical Vapor Deposition (CVD) growth process. Type IIa