



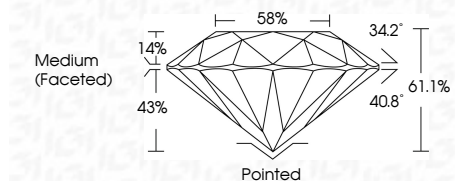
ELECTRONIC COPY

LG653416703
Report verification at igi.org



September 21, 2024
IGI Report Number LG653416703
Description LABORATORY GROWN DIAMOND
Shape and Cutting Style ROUND BRILLIANT
Measurements 6.84 - 6.93 X 4.21 MM

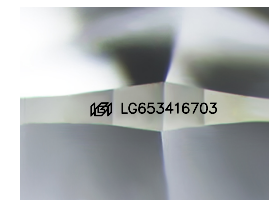
GRADING RESULTS
Carat Weight 1.22 CARAT
Color Grade H
Clarity Grade VS 1
Cut Grade IDEAL



ADDITIONAL GRADING INFORMATION
Polish EXCELLENT
Symmetry EXCELLENT
Fluorescence NONE
Inscription(s) IGI LG653416703
Comments: This Laboratory Grown Diamond was created by Chemical Vapor Deposition (CVD) growth process. Type IIa

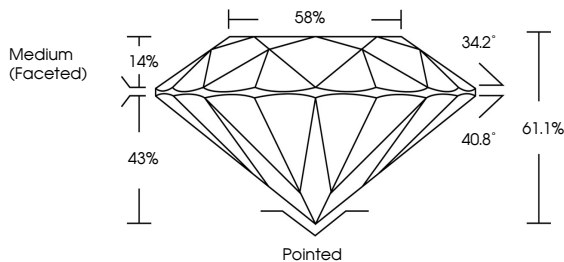


September 21, 2024
IGI Report No LG653416703
ROUND BRILLIANT
6.84 - 6.93 X 4.21 MM
1.22 CARAT H
VS 1 IDEAL 61.1% 58%
Medium (Faceted)
Pointed EXCELLENT EXCELLENT NONE
None IGI LG653416703
Comments: This Laboratory Grown Diamond was created by Chemical Vapor Deposition (CVD) growth process. Type IIa

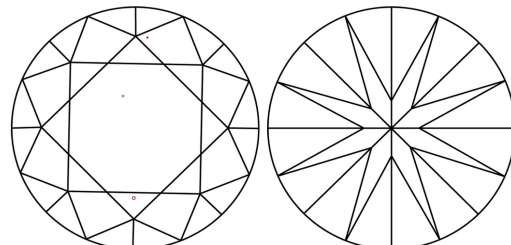


Sample Image Used

PROPORTIONS



CLARITY CHARACTERISTICS



KEY TO SYMBOLS
Red symbols indicate internal characteristics.
Green symbols indicate external characteristics.

Table with 5 columns: D, E, F, G, H, I, J, Faint, Very Light, Light

Table with 5 columns: IF, VS 1-2, VS 1-2, SI 1-2, I 1-3, Internally Flawless, Very Very Slightly Included, Very Slightly Included, Slightly Included, Included

